

# Recombinant eIF4B Monoclonal Antibody

Catalog Number:E-AB-81554



**Note:** Centrifuge before opening to ensure complete recovery of vial contents.

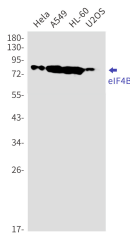
## Description

|                     |                                                                                                      |
|---------------------|------------------------------------------------------------------------------------------------------|
| <b>Reactivity</b>   | Human                                                                                                |
| <b>Immunogen</b>    | A synthetic peptide of human eIF4B                                                                   |
| <b>Host</b>         | Rabbit                                                                                               |
| <b>Isotype</b>      | IgG                                                                                                  |
| <b>Clone</b>        | R07-2H2                                                                                              |
| <b>Purification</b> | Affinity Purified                                                                                    |
| <b>Conjugation</b>  | Unconjugated                                                                                         |
| <b>Formulation</b>  | 50mM Tris-Glycine(pH 7.4), 0.15M NaCl, 40% Glycerol, 0.01% Sodium azide and 0.05% protective protein |

## Applications Recommended Dilution

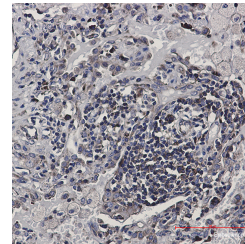
|            |              |
|------------|--------------|
| <b>WB</b>  | 1:500-1:1000 |
| <b>IHC</b> | 1:50-1:100   |

## Data



Western blot detection of eIF4B in HeLa, A549, HL-60, U2OS cell lysates using eIF4B Rabbit mAb (1:1000 diluted). Predicted band size: 69kDa. Observed band size: 80kDa.

**Observed Mw: 80kDa**  
**Calculated Mw: 69kDa**



Immunohistochemistry of eIF4B in paraffin-embedded Human lung cancer tissue using eIF4B Rabbit mAb at dilution 1:50

## Preparation & Storage

**Storage** Store at -20°C. Avoid freeze / thaw cycles.

## Background

EIF4B (eukaryotic translation initiation factor 4B) is a protein-coding gene. GO annotations related to this gene include RNA binding and translation initiation factor activity. An important paralog of this gene is EIF4H.

## For Research Use Only

A Reliable Research Partner in Life Science and Medicine

Toll-free: 1-888-852-8623

Web: [www.elabscience.com](http://www.elabscience.com)

Tel: 1-832-243-6086

Email: [techsupport@elabscience.com](mailto:techsupport@elabscience.com)

Fax: 1-832-243-6017