

# Recombinant EpCAM Monoclonal Antibody

Catalog Number:E-AB-81555



**Note:** Centrifuge before opening to ensure complete recovery of vial contents.

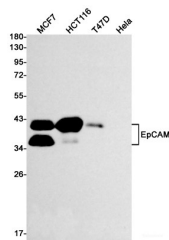
## Description

<b>Reactivity</b>	Human,Mouse,Rat
<b>Immunogen</b>	Recombinant protein of human EpCAM
<b>Host</b>	Rabbit
<b>Isotype</b>	IgG
<b>Clone</b>	R08-8D1
<b>Purification</b>	Affinity Purified
<b>Conjugation</b>	Unconjugated
<b>Formulation</b>	50mM Tris-Glycine(pH 7.4), 0.15M NaCl, 40% Glycerol, 0.01% Sodium azide and 0.05% protective protein

## Applications Recommended Dilution

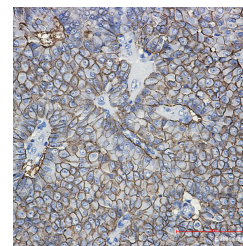
<b>WB</b>	1:500-1:1000
<b>IHC</b>	1:50-1:100
<b>IF</b>	1:20-1:100

## Data

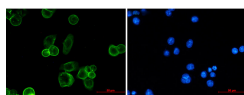


Western blot detection of EpCAM in MCF7,HCT116,T47D,HeLa cell lysates using EpCAM Rabbit mAb(1:1000 diluted).Predicted band size:35kDa.Observed band size:40kDa.

**Observed Mw:40kDa**  
**Calculated Mw:35kDa**



Immunohistochemistry of EpCAM in paraffin-embedded Human breast cancer tissue using EpCAM Rabbit mAb at dilution 1:50



Immunofluorescence of EpCAM (green) in MCF-7 using EpCAM antibody at dilution 1:20, and DAPI(blue)

## Preparation & Storage

### For Research Use Only

A Reliable Research Partner in Life Science and Medicine

Toll-free: 1-888-852-8623

Web: [www.elabscience.com](http://www.elabscience.com)

Tel: 1-832-243-6086

Email: [techsupport@elabscience.com](mailto:techsupport@elabscience.com)

Fax: 1-832-243-6017

# Recombinant EpCAM Monoclonal Antibody

Catalog Number:E-AB-81555



**Storage** Store at -20°C. Avoid freeze / thaw cycles.

## Background

Epithelial cell adhesion molecule (EpCAM,CD326) is a type I transmembrane glycoprotein that functions as a homophilic,epithelial-specific intercellular cell-adhesion molecule. In addition to cell adhesion,EpCAM is also involved in cellular signaling,cell migration,proliferation,and differentiation. EpCAM is highly expressed on most carcinomas and therefore of potential use as a diagnostic and prognostic marker for a variety of carcinomas,and has become a therapeutic target.

---

## For Research Use Only

A Reliable Research Partner in Life Science and Medicine

Toll-free: 1-888-852-8623

Web: [www.elabscience.com](http://www.elabscience.com)

Tel: 1-832-243-6086

Email: [techsupport@elabscience.com](mailto:techsupport@elabscience.com)

Fax: 1-832-243-6017