

# Recombinant GNB2 Monoclonal Antibody

Catalog Number:E-AB-81563



**Note:** Centrifuge before opening to ensure complete recovery of vial contents.

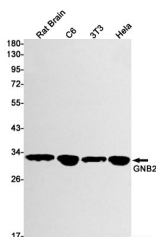
## Description

<b>Reactivity</b>	Human,Mouse,Rat
<b>Immunogen</b>	A synthetic peptide of human GNB2
<b>Host</b>	Rabbit
<b>Isotype</b>	IgG
<b>Clone</b>	R04-1A2
<b>Purification</b>	Affinity Purified
<b>Conjugation</b>	Unconjugated
<b>Formulation</b>	50mM Tris-Glycine(pH 7.4), 0.15M NaCl, 40% Glycerol, 0.01% Sodium azide and 0.05% protective protein

## Applications Recommended Dilution

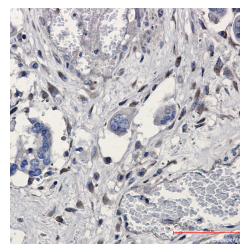
<b>WB</b>	1:1000-1:2000
<b>IHC</b>	1:20-1:100

## Data



Western blot detection of GNB2 in Rat Brain,C6,3T3,Hela cell lysates using GNB2 Rabbit mAb(1:1000 diluted).Predicted band size:37kDa.Observed band size:32kDa.

**Observed Mw:32kDa**  
**Calculated Mw:37kDa**



Immunohistochemistry of GNB2 in paraffin-embedded Human Cholangiocarcinoma using GNB2 Rabbit mAb at dilution 1:20

## Preparation & Storage

**Storage** Store at -20°C. Avoid freeze / thaw cycles.

## Background

Heterotrimeric guanine nucleotide-binding proteins (G proteins), which integrate signals between receptors and effector proteins, are composed of an alpha, a beta, and a gamma subunit. These subunits are encoded by families of related genes. This gene encodes a beta subunit. Beta subunits are important regulators of alpha subunits, as well as of certain signal transduction receptors and effectors. This gene contains a trinucleotide (CCG) repeat length polymorphism in its 5' UTR.

## For Research Use Only

A Reliable Research Partner in Life Science and Medicine

Toll-free: 1-888-852-8623

Web: [www.elabscience.com](http://www.elabscience.com)

Tel: 1-832-243-6086

Email: [techsupport@elabscience.com](mailto:techsupport@elabscience.com)

Fax: 1-832-243-6017