

Recombinant Integrin alpha 5 Monoclonal Antibody

Catalog Number:E-AB-81573



Note: Centrifuge before opening to ensure complete recovery of vial contents.

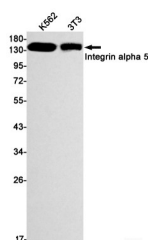
Description

Reactivity	Human,Mouse
Immunogen	A synthetic peptide of human Integrin alpha 5
Host	Rabbit
Isotype	IgG
Clone	R02-3G4
Purification	Affinity Purified
Conjugation	Unconjugated
Formulation	50mM Tris-Glycine(pH 7.4), 0.15M NaCl, 40% Glycerol, 0.01% Sodium azide and 0.05% protective protein

Applications Recommended Dilution

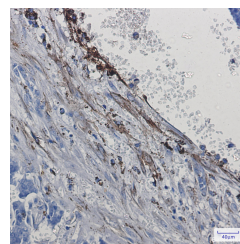
WB	1:1000-1:5000
IHC	1:50-1:100

Data



Western blot detection of Integrin alpha 5 in K562,3T3 cell lysates using Integrin alpha 5 Rabbit mAb(1:1000 diluted).Predicted band size:115kDa.Observed band size:150kDa.

Observed Mw:150kDa
Calculated Mw:115kDa



Immunohistochemistry of Integrin alpha 5 in paraffin-embedded Human breast cancer tissue using Integrin alpha 5 Rabbit mAb at dilution 1:50

Preparation & Storage

Storage Store at -20°C. Avoid freeze / thaw cycles.

Background

The product of this gene belongs to the integrin alpha chain family. Integrins are heterodimeric integral membrane proteins composed of an alpha chain and a beta chain. This gene encodes the integrin alpha 5 chain. Alpha chain 5 undergoes post-translational cleavage in the extracellular domain to yield disulfide-linked light and heavy chains that join with beta 1 to form a fibronectin receptor. In addition to adhesion, integrins are known to participate in cell-surface mediated signalling. Integrin alpha 5 and integrin alpha V chains are produced by distinct genes.

For Research Use Only

A Reliable Research Partner in Life Science and Medicine

Toll-free: 1-888-852-8623

Web: www.elabscience.com

Tel: 1-832-243-6086

Email: techsupport@elabscience.com

Fax: 1-832-243-6017