

# Recombinant MERTK Monoclonal Antibody

Catalog Number:E-AB-81582



**Note:** Centrifuge before opening to ensure complete recovery of vial contents.

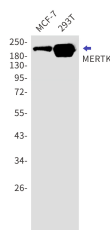
## Description

<b>Reactivity</b>	Human
<b>Immunogen</b>	A synthetic peptide of human MERTK
<b>Host</b>	Rabbit
<b>Isotype</b>	IgG
<b>Clone</b>	R07-6H2
<b>Purification</b>	Affinity Purified
<b>Conjugation</b>	Unconjugated
<b>Formulation</b>	50mM Tris-Glycine(pH 7.4), 0.15M NaCl, 40% Glycerol, 0.01% Sodium azide and 0.05% protective protein

## Applications

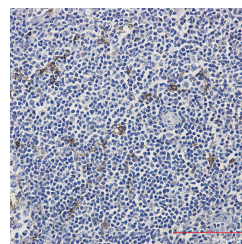
<b>WB</b>	1:500-1:1000
<b>IHC</b>	1:50-1:100

## Data



Western blot detection of MERTK in MCF-7,293T cell lysates using MERTK Rabbit mAb(1:1000 diluted).Predicted band size:110kDa.Observed band size:210kDa.

**Observed Mw:210kDa**  
**Calculated Mw:110kDa**



Immunohistochemistry of MERTK in paraffin-embedded Human tonsil using MERTK Rabbit mAb at dilution 1:50

## Preparation & Storage

**Storage** Store at -20°C. Avoid freeze / thaw cycles.

## Background

This gene is a member of the MER/AXL/TYRO3 receptor kinase family and encodes a transmembrane protein with two fibronectin type-III domains, two Ig-like C2-type (immunoglobulin-like) domains, and one tyrosine kinase domain. Mutations in this gene have been associated with disruption of the retinal pigment epithelium (RPE) phagocytosis pathway and onset of autosomal recessive retinitis pigmentosa (RP).

## For Research Use Only

A Reliable Research Partner in Life Science and Medicine

Toll-free: 1-888-852-8623

Web: [www.elabscience.com](http://www.elabscience.com)

Tel: 1-832-243-6086

Email: [techsupport@elabscience.com](mailto:techsupport@elabscience.com)

Fax: 1-832-243-6017