

Recombinant Paxillin Monoclonal Antibody

Catalog Number:E-AB-81593



Note: Centrifuge before opening to ensure complete recovery of vial contents.

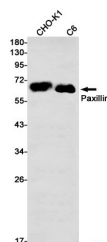
Description

Reactivity	Human,Rat,Hamster
Immunogen	A synthetic peptide of human Paxillin
Host	Rabbit
Isotype	IgG
Clone	R07-1B4
Purification	Affinity Purified
Conjugation	Unconjugated
Formulation	50mM Tris-Glycine(pH 7.4), 0.15M NaCl, 40% Glycerol, 0.01% Sodium azide and 0.05% protective protein

Applications Recommended Dilution

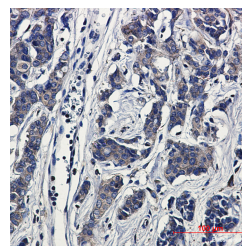
WB	1:1000-1:2000
IHC	1:20-1:100

Data



Western blot detection of Paxillin in CHO-K1,C6 cell lysates using Paxillin Rabbit mAb(1:1000 diluted).Predicted band size:65kDa.Observed band size:65kDa.

Observed Mw:65kDa
Calculated Mw:65kDa



Immunohistochemical of Paxillin in Human breast cancer tissue using Paxillin antibody at dilution 1:20

Preparation & Storage

Storage Store at -20°C. Avoid freeze / thaw cycles.

Background

This gene encodes a cytoskeletal protein involved in actin-membrane attachment at sites of cell adhesion to the extracellular matrix (focal adhesion). Alternatively spliced transcript variants encoding different isoforms have been described for this gene. These isoforms exhibit different expression pattern, and have different biochemical, as well as physiological properties (PMID:9054445).

For Research Use Only

A Reliable Research Partner in Life Science and Medicine

Toll-free: 1-888-852-8623

Web: www.elabscience.com

Tel: 1-832-243-6086

Email: techsupport@elabscience.com

Fax: 1-832-243-6017