

Recombinant Superoxide Dismutase 1 Monoclonal Antibody

Catalog Number:E-AB-81608

Note: Centrifuge before opening to ensure complete recovery of vial contents.

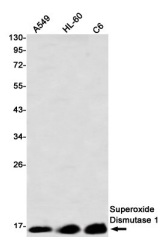
Description

Reactivity	Human,Rat
Immunogen	A synthetic peptide of human Superoxide Dismutase 1
Host	Rabbit
Isotype	IgG
Clone	R08-5A5
Purification	Affinity Purified
Conjugation	Unconjugated
Formulation	50mM Tris-Glycine(pH 7.4), 0.15M NaCl, 40% Glycerol, 0.01% Sodium azide and 0.05% protective protein

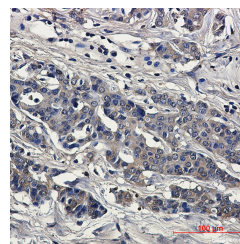
Applications Recommended Dilution

WB	1:500-1:1000
IHC	1:50-1:100

Data



Western blot detection of Superoxide Dismutase 1 in A549,HL-60,C6 using Superoxide Dismutase 1 Rabbit mAb(1:1000 diluted)
Observed Mw:16kDa
Calculated Mw:16kDa



Immunohistochemical of Superoxide Dismutase 1 in Human breast cancer tissue using Superoxide Dismutase 1 antibody at dilution 1:50

Preparation & Storage

Storage Store at -20°C. Avoid freeze / thaw cycles.

Background

The protein encoded by this gene binds copper and zinc ions and is one of two isozymes responsible for destroying free superoxide radicals in the body. The encoded isozyme is a soluble cytoplasmic protein, acting as a homodimer to convert naturally-occurring but harmful superoxide radicals to molecular oxygen and hydrogen peroxide. The other isozyme is a mitochondrial protein. Mutations in this gene have been implicated as causes of familial amyotrophic lateral sclerosis. Rare transcript variants have been reported for this gene.

For Research Use Only

A Reliable Research Partner in Life Science and Medicine

Toll-free: 1-888-852-8623

Web: www.elabscience.com

Tel: 1-832-243-6086

Email: techsupport@elabscience.com

Fax: 1-832-243-6017