

# Recombinant Synaptophysin Monoclonal Antibody

Catalog Number:E-AB-81610



**Note:** Centrifuge before opening to ensure complete recovery of vial contents.

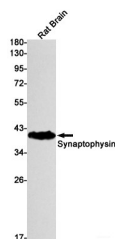
## Description

<b>Reactivity</b>	Human,Rat
<b>Immunogen</b>	A synthetic peptide of human Synaptophysin
<b>Host</b>	Rabbit
<b>Isotype</b>	IgG
<b>Clone</b>	R06-2A2
<b>Purification</b>	Affinity Purified
<b>Conjugation</b>	Unconjugated
<b>Formulation</b>	50mM Tris-Glycine(pH 7.4), 0.15M NaCl, 40% Glycerol, 0.01% Sodium azide and 0.05% protective protein

## Applications Recommended Dilution

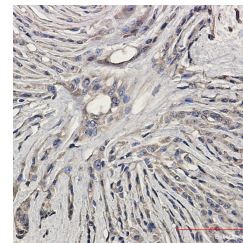
<b>WB</b>	1:1000-1:3000
<b>IHC</b>	1:20-1:100

## Data



Western blot detection of Synaptophysin in Rat Brain lysates using Synaptophysin Rabbit mAb(1:1000 diluted).Predicted band size:34kDa.Observed band size:38kDa.

**Observed Mw:38kDa**  
**Calculated Mw:34kDa**



Immunohistochemistry of Synaptophysin in paraffin-embedded Human Brain using Synaptophysin Rabbit mAb at dilution 1:20

## Preparation & Storage

**Storage** Store at -20°C. Avoid freeze / thaw cycles.

## Background

This gene encodes an integral membrane protein of small synaptic vesicles in brain and endocrine cells. The protein also binds cholesterol and is thought to direct targeting of vesicle-associated membrane protein 2 (synaptobrevin) to intracellular compartments. Mutations in this gene are associated with X-linked mental retardation (XLMR).

## For Research Use Only

A Reliable Research Partner in Life Science and Medicine

Toll-free: 1-888-852-8623

Web: [www.elabscience.com](http://www.elabscience.com)

Tel: 1-832-243-6086

Email: [techsupport@elabscience.com](mailto:techsupport@elabscience.com)

Fax: 1-832-243-6017