

GAPDH Monoclonal Antibody

Catalog Number: E-AB-48016

30 Publications

 **DIA-AN**[®]
by Elabscience

Note: Centrifuge before opening to ensure complete recovery of vial contents.

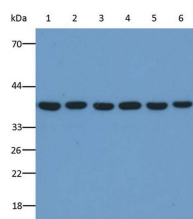
Description

Reactivity	Human, Mouse, Rat, Bovine, Caprine, Guinea pig, Rabbit, Porcine,
Immunogen	Recombinant human GAPDH protein expressed by E.coli
Host	Mouse
Isotype	IgG1
Purification	Protein A/G Purified
Conjugation	Unconjugated
Formulation	PBS with 0.02% sodium azide, 50% glycerol, pH 7.4

Applications Recommended Dilution

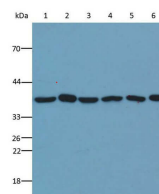
WB	1:5000-10000
-----------	--------------

Data

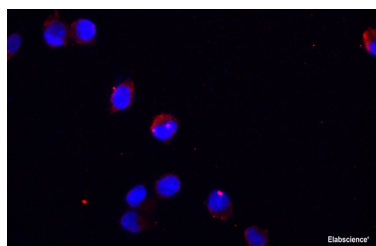


Western Blot analysis of GAPDH in various cell lines at dilution of 1:5000. Lane1: DU145 whole cell lysate, Lane2: OS-RC-2 whole cell lysate, Lane3: T-47D whole cell lysates, Lane4: HEC-1B whole cell lysate, Lane5: HepG2 whole cell lysate, Lane6: HEK-293 whole cell lysate, Lysates/proteins at 20µg per lane.

Observed Mw: 36 kDa
Calculated Mw: 36 kDa



Western blot analysis of GAPDH in various tissues of different species at dilution of 1:5000. Lane1: Rat heart, whole tissue lysate, Lane2: Porcine brain, whole tissue lysate, Lane3: Bovine kidney, whole tissue lysate, Lane4: Guinea pig liver, whole tissue lysate, Lane5: Rabbit pancreas, whole tissue lysate, Lane6: Caprine spleen, whole tissue lysate. Lysates/proteins at 20µg per lane.



Immunofluorescent analysis of 293F cells using anti-GAPDH monoclonal antibody at 1:400 dilution.

Preparation & Storage

Storage Store at -20°C. Avoid freeze / thaw cycles.

Background

For Research Use Only

A Reliable Research Partner in Life Science and Medicine

Toll-free: 1-888-852-8623

Web: www.elabscience.com

Tel: 1-832-243-6086

Email: techsupport@elabscience.com

Fax: 1-832-243-6017

GAPDH Monoclonal Antibody

Catalog Number: E-AB-48016

30 Publications



GAPDH is an enzyme of 37kDa that catalyzes the sixth step of glycolysis and thus serves to break down glucose for energy and carbon molecules. Because the GAPDH gene is often stably and constitutively expressed at high levels in most tissues and cells, it is commonly used as a loading control for western blot and as a control for qPCR.

For Research Use Only

A Reliable Research Partner in Life Science and Medicine

Toll-free: 1-888-852-8623

Tel: 1-832-243-6086

Fax: 1-832-243-6017

Web: www.elabscience.com

Email: techsupport@elabscience.com