

**Note:** Centrifuge before opening to ensure complete recovery of vial contents.

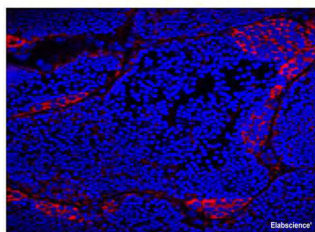
## Description

<b>Reactivity</b>	Gibel carp
<b>Immunogen</b>	Recombinant Zebrafish VASA protein expressed by E.coli
<b>Host</b>	Mouse
<b>Isotype</b>	IgG1
<b>Clone</b>	7A11
<b>Purification</b>	ProteinA/G
<b>Conjugation</b>	Unconjugated
<b>Formulation</b>	PBS with 0.02% sodium azide, 50% glycerol,pH 7.4

## Applications Recommended Dilution

<b>IF</b>	1:100-200
-----------	-----------

## Data



Immunofluorescence of frozen section of male Gibel carp gonads with anti-VASA mouse monoclonal antibody at dilution of 1:100.

## Preparation & Storage

<b>Storage</b>	Store at -20°C. Avoid freeze / thaw cycles.
----------------	---

## Background

Vasa is an RNA binding protein with an ATP-dependent RNA helicase that is a member of the DEAD box family of proteins. The vasa gene, is essential for germ cell development and was first identified in *Drosophila melanogaster*, but has since been fo

## For Research Use Only

A Reliable Research Partner in Life Science and Medicine

Toll-free: 1-888-852-8623

Web: [www.elabscience.com](http://www.elabscience.com)

Tel: 1-832-243-6086

Email: [techsupport@elabscience.com](mailto:techsupport@elabscience.com)

Fax: 1-832-243-6017