

m6A Monoclonal Antibody

Catalog Number:E-AB-48030

Note: Centrifuge before opening to ensure complete recovery of vial contents.

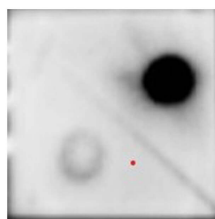
Description

Reactivity	E.coli
Immunogen	N6-methyladenosine conjugated to KLH
Host	Mouse
Isotype	IgG1
Clone	3C8
Purification	Protein A/G Purified
Conjugation	Unconjugated
Formulation	PBS with 0.02% sodium azide, 50% glycerol,pH 7.4

Applications Recommended Dilution

Dot Blot	1:1000-2000
-----------------	-------------

Data



Dot blot of 100 ng of genomic DNA from Dam + and Dam - E.coli strains have been spotted and probed with mouse anti-m6A Monoclonal Antibody at dilution 1 : 1000. UP: Dam +, Down: Dam -

Preparation & Storage

Storage	Store at -20°C. Avoid freeze / thaw cycles.
----------------	---

Background

N6-methyladenosine (m6A) is the most prevalent, abundant and conserved internal cotranscriptional modification in eukaryotic RNAs, especially within higher eukaryotic cells. Recent studies have shown that m6A RNA modification plays essential role in both physiological and pathological conditions, especially in the initiation and progression of different types of human cancers.

For Research Use Only

A Reliable Research Partner in Life Science and Medicine

Toll-free: 1-888-852-8623

Web: www.elabscience.com

Tel: 1-832-243-6086

Email: techsupport@elabscience.com

Fax: 1-832-243-6017