

MHC class I Monoclonal Antibody(W6/32)

Catalog Number:E-AB-48031



Note: Centrifuge before opening to ensure complete recovery of vial contents.

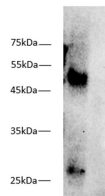
Description

Reactivity	Mouse
Immunogen	Membrane of human tonsil cells
Host	Mouse
Isotype	IgG2a
Purification	Protein A/G Purified
Conjugation	Unconjugated
Formulation	PBS with 0.02% sodium azide, 50% glycerol,pH 7.4

Applications Recommended Dilution

WB	1:1000-2000
-----------	-------------

Data



Western blot of mouse spleen lysates with anti-MHC I antibody at dilution of 1:1000.

Observed Mw:44 kDa

Calculated Mw:40 kDa

Preparation & Storage

Storage Store at -20°C. Avoid freeze / thaw cycles.

Background

MHC class I Antibody (W6/32) is a high quality monoclonal MHC class I antibody (also designated MHC antibody, MHC class I antibody, HLA-A (Major Histocompatibility Complex, Class 1a) antibody, HLA-B (Major Histocompatibility Complex, Class 1b) antibody, HLA-C (Major Histocompatibility Complex, Class 1c) antibody, MHC class I heterodimer receptor heavy chain component antibody, or MHC class I cell surface receptor antibody) suitable for the detection of the MHC class I protein of human origin.

For Research Use Only

A Reliable Research Partner in Life Science and Medicine

Toll-free: 1-888-852-8623

Web: www.elabscience.com

Tel: 1-832-243-6086

Email: techsupport@elabscience.com

Fax: 1-832-243-6017