

# Streptavidin Monoclonal Antibody

Catalog Number:E-AB-48032



**Note:** Centrifuge before opening to ensure complete recovery of vial contents.

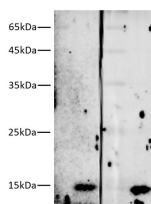
## Description

<b>Reactivity</b>	All
<b>Immunogen</b>	Native Streptomyces Avidinii streptavidin protein
<b>Host</b>	Mouse
<b>Isotype</b>	IgG1
<b>Clone</b>	1C4
<b>Purification</b>	Protein A/G Purified
<b>Conjugation</b>	Unconjugated
<b>Formulation</b>	PBS with 0.02% sodium azide, 50% glycerol,pH 7.4

## Applications Recommended Dilution

<b>WB</b>	1:5000-10000
-----------	--------------

## Data



Western blotting of 10ng Streptavidin (16kDa) with anti-Streptavidin mouse monoclonal antibody at dilution of lane 1: 1:5000, lane 2: 1:10000.

**Observed Mw:16kDa**  
**Calculated Mw:16kDa**

## Preparation & Storage

**Storage** Store at -20°C. Avoid freeze / thaw cycles.

## Background

Streptavidin is a biotin-binding protein found in the culture broth of the bacterium Streptomyces. Streptavidin can bind to four moles of biotin per mole of protein with extremely high affinity, approximately 10,000-15,000 Da. Streptavidin lacks the carbohydrate side chains present on avidin and has an isoelectric point of 6.5 to avidin's 10 far closer to that at which most useful biological interactions occur. As a result, Streptavidin frequently exhibits much lower non-specific binding than avidin does.

## For Research Use Only

A Reliable Research Partner in Life Science and Medicine

Toll-free: 1-888-852-8623

Web: [www.elabscience.com](http://www.elabscience.com)

Tel: 1-832-243-6086

Email: [techsupport@elabscience.com](mailto:techsupport@elabscience.com)

Fax: 1-832-243-6017