

GFP Monoclonal Antibody

Catalog Number:E-AB-48043



Note: Centrifuge before opening to ensure complete recovery of vial contents.

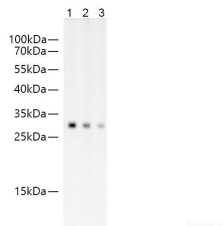
Description

Reactivity	All
Immunogen	Recombinant GFP protein expressed by E.coli
Host	Mouse
Isotype	IgG2a
Clone	2A7
Purification	Protein A/G Purified
Conjugation	Unconjugated
Formulation	PBS with 0.02% sodium azide,50% glycerol,pH 7.4

Applications Recommended Dilution

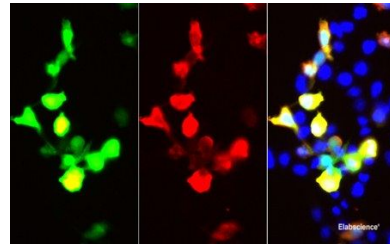
WB	1:100000-200000
IF	1:8000-16000
IP	3ug/sample

Data

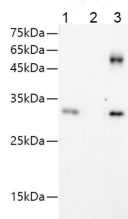


Western blot of GFP protein with anti-GFP at dilution of 1:50000, 1:100000, 200000. Lane 1:293F cells transfected with GFP-Tag fusion protein, lane 2: 293F cells transfected with GFP-Tag fusion protein, Lane 3:293F cells transfected with GFP-Tag fusion protein

Observed Mw:32kDa
Calculated Mw:32kDa



Immunofluorescent analysis of 293F cells transfected with the FLAG-GFP, using anti-GFP-Tag Monoclonal Antibody at dilution of 1:50000.



IP Result of 293F cells transfected with GFP-Tag fusion protein,using anti-GFP-Tag mouse monoclonal antibody. Lane 1:input, lane 2: mouse IgG2a Isotype Control, Lane 3: anti-GFP-Tag monoclonal antibody

For Research Use Only

A Reliable Research Partner in Life Science and Medicine

Toll-free: 1-888-852-8623

Web: www.elabscience.com

Tel: 1-832-243-6086

Email: techsupport@elabscience.com

Fax: 1-832-243-6017

GFP Monoclonal Antibody

Catalog Number:E-AB-48043



Preparation & Storage

Storage Store at -20°C. Avoid freeze / thaw cycles.

Background

The green fluorescent protein (GFP) is a protein that exhibits bright green fluorescence when exposed to light in the blue to ultraviolet range. It is first isolated from the jellyfish *Aequorea victoria* and is frequently used as a reporter of expression. GFP is widely used in gene expression, tracing and protein subcellular localization.

For Research Use Only

A Reliable Research Partner in Life Science and Medicine

Toll-free: 1-888-852-8623

Web: www.elabscience.com

Tel: 1-832-243-6086

Email: techsupport@elabscience.com

Fax: 1-832-243-6017