

Note: Centrifuge before opening to ensure complete recovery of vial contents.

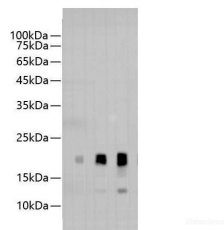
Description

Reactivity	All
Immunogen	Synthetic peptide corresponding to AVI tag conjugated to keyhole limpet haemocyanin.
Host	Rabbit
Isotype	IgG
Purification	Antigen Affinity Purification
Conjugation	Unconjugated
Formulation	PBS with 0.02% sodium azide, 50% glycerol,pH 7.4

Applications Recommended Dilution

WB	1:2000-5000
-----------	-------------

Data



Western blotting of AVI-Tag fused recombinant protein with Anti-AVI rabbit polyclonal antibody at dilution of lane 1: 1:10000, lane 2: 1:5000, lane 3 1:2000.

Observed Mw:20kDa
Calculated Mw:20kDa

Preparation & Storage

Storage Store at -20°C. Avoid freeze / thaw cycles.

Background

Avi tag is a biotin-acceptor peptide, GLNDIFEAQKIEWHE. Biotinylation of the Avi-tag is enzymatically added by the E. coli biotin ligase BirA. This results in a single biotin molecule covalently attached to the lysine residue within the Avi-tag

For Research Use Only

A Reliable Research Partner in Life Science and Medicine

Toll-free: 1-888-852-8623

Web: www.elabscience.com

Tel: 1-832-243-6086

Email: techsupport@elabscience.com

Fax: 1-832-243-6017