

**Note:** Centrifuge before opening to ensure complete recovery of vial contents.

## Description

<b>Reactivity</b>	All
<b>Immunogen</b>	Recombinant Aequorea victoria GFP protein expressed by E.coli
<b>Host</b>	Rabbit
<b>Isotype</b>	IgG
<b>Purification</b>	Antigen Affinity Purification
<b>Conjugation</b>	Unconjugated
<b>Formulation</b>	PBS with 0.02% sodium azide, 50% glycerol,pH 7.4

## Applications Recommended Dilution

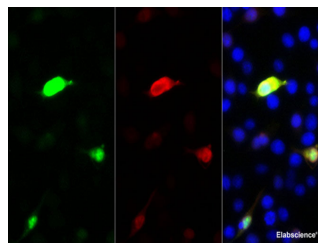
<b>WB</b>	1:1000-2000
<b>IF</b>	1:16000-32000

## Data



Western blot of eGFP-tagged fused protein with anti-eGFP-tag at dilution of 1:2000.

**Observed Mw:30kDa**  
**Calculated Mw:30kDa**



Immunofluorescent analysis of 293F cells transfected with the GFP, using anti-GFP Polyclonal Antibody at 1:32000 dilution.

## Preparation & Storage

**Storage** Store at -20°C. Avoid freeze / thaw cycles.

## Background

The green fluorescent protein (GFP) is a protein that exhibits bright green fluorescence when exposed to light in the blue to ultraviolet range. It is first isolated from the jellyfish *Aequorea victoria* and is frequently used as a reporter of expression.

## For Research Use Only

A Reliable Research Partner in Life Science and Medicine

Toll-free: 1-888-852-8623

Web: [www.elabscience.com](http://www.elabscience.com)

Tel: 1-832-243-6086

Email: [techsupport@elabscience.com](mailto:techsupport@elabscience.com)

Fax: 1-832-243-6017