

beta actin Polyclonal Antibody

Catalog Number:E-AB-40517

2 Publications



Note: Centrifuge before opening to ensure complete recovery of vial contents.

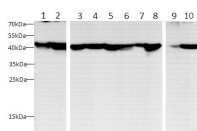
Description

Reactivity	Human,Mouse,Rat,Zebrafish,Monkey
Immunogen	Recombinant human Beta actin protein.
Host	Rabbit
Isotype	IgG
Purification	Antigen Affinity Purification
Conjugation	Unconjugated
Formulation	PBS with 0.02% sodium azide, 50% glycerol,pH 7.4

Applications Recommended Dilution

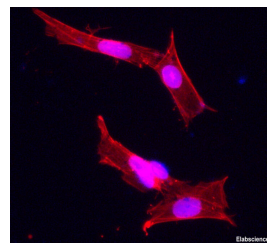
WB	1:1000-2000
IF	1:100-400

Data



Western blot with anti-beta Actin Polyclonal antibody at dilution of 1:1000.lane 1: HT-29 whole cell lysate,lane 2:Jurkat whole cell lysate,lane 3:Mouse spleen,lane 4:Rat spleen,lane 5:Mouse lung,lane 6: Rat lung,lane 7:RAW264.7 whole cell lysate,lane 8:C6 whole cell lysate,lane 9:Zebrafish,lane 10:Vero

Observed Mw:43kDa
Calculated Mw:43kDa



Immunohistochemical analysis of SH-SY5Y, using anti-beta actin Polyclonal Antibody at 1:100 dilution.

Preparation & Storage

Storage Store at -20°C. Avoid freeze / thaw cycles.

Background

Beta-actin (ACTB/ACTB) is one of six different actin isoforms in humans. Actins are highly conserved proteins that are involved in cell motility, structure and integrity. Beta actin is a major constituent of the contractile apparatus and one of th

For Research Use Only

A Reliable Research Partner in Life Science and Medicine

Toll-free: 1-888-852-8623

Web: www.elabscience.com

Tel: 1-832-243-6086

Email: techsupport@elabscience.com

Fax: 1-832-243-6017