

beta Tubulin Polyclonal Antibody

Catalog Number: E-AB-40518

1 Publications



Note: Centrifuge before opening to ensure complete recovery of vial contents.

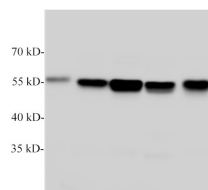
Description

Reactivity	Human, Mouse, Rat
Immunogen	Synthetic peptide derived from human TUBB protein conjugated to keyhole limpet haemocyanin.
Host	Rabbit
Isotype	IgG
Purification	Antigen Affinity Purification
Conjugation	Unconjugated
Formulation	PBS with 0.02% sodium azide, 50% glycerol, pH 7.4

Applications Recommended Dilution

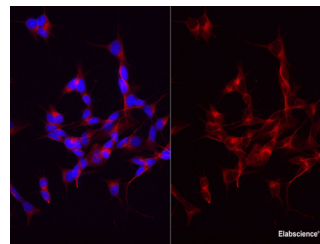
WB	1:1000-2000
IF	1:2000

Data



Western Blotting with anti-TUBB polyclonal antibody at dilution of 1:1000. Lane 1: HeLa, Lane 2: NIH/3T3, Lane 3: C6, Lane 4: PC-12, Lane 5: A431

Observed Mw: 55kDa
Calculated Mw: 55kDa



Immunofluorescent analysis of SHSY-5Y cells with anti-beta Tubulin Polyclonal Antibody at dilution of 1:2000.

Preparation & Storage

Storage Store at -20°C. Avoid freeze / thaw cycles.

Background

Tubulin is a highly conserved $\alpha\beta$ dimeric protein present and is essential for all eukaryotes. $\alpha\beta$ -Tubulin dimers assemble into microtubules, dynamic polymers important in a variety of functions, most noticeably, mitosis. Tubulin assembly and disassembly

For Research Use Only

A Reliable Research Partner in Life Science and Medicine

Toll-free: 1-888-852-8623

Web: www.elabscience.com

Tel: 1-832-243-6086

Email: techsupport@elabscience.com

Fax: 1-832-243-6017