

Histone H3 Polyclonal Antibody

Catalog Number:E-AB-40520



Note: Centrifuge before opening to ensure complete recovery of vial contents.

Description

Reactivity	Human, Mouse, Rat
Immunogen	Synthetic peptide derived from N-terminus of human Histone H3 protein conjugated to keyhole limpet haemocyanin.
Host	Rabbit
Isotype	IgG
Purification	Antigen Affinity Purification
Conjugation	Unconjugated
Formulation	PBS with 0.02% sodium azide, 50% glycerol,pH 7.4

Applications Recommended Dilution

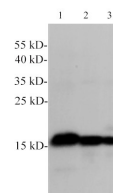
WB	1:5000-10000
-----------	--------------

Data



Western blot of Mouse spleen lysates with anti-Histone H3 pAb at dilution of 1:1000.

Observed Mw:15kDa
Calculated Mw:15kDa



Western Blotting with anti-Histone H3 polyclonal antibody at dilution of 1:5000. Lane 1:HT-29 cell lysates, Lane 2: NIH/3T3 cell lysates, Lane 3: C6

Preparation & Storage

Storage Store at -20°C. Avoid freeze / thaw cycles.

Background

Histone H3 is one of the DNA-binding proteins found in the chromatin of all eukaryotic cells. H3 along with four core histone proteins binds to DNA forming the structure of the nucleosome. This antibody is not cross-reactive with other histones.

For Research Use Only

A Reliable Research Partner in Life Science and Medicine

Toll-free: 1-888-852-8623

Web: www.elabscience.com

Tel: 1-832-243-6086

Email: techsupport@elabscience.com

Fax: 1-832-243-6017