

S-tag Polyclonal Antibody

Catalog Number:E-AB-40522



Note: Centrifuge before opening to ensure complete recovery of vial contents.

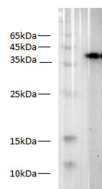
Description

Reactivity	All
Immunogen	Synthetic peptide corresponding to S tag conjugated to keyhole limpet haemocyanin.
Host	Rabbit
Isotype	IgG
Purification	Antigen Affinity Purification
Conjugation	Unconjugated
Formulation	PBS with 0.02% sodium azide, 50% glycerol,pH 7.4

Applications Recommended Dilution

WB	1:2000-4000
-----------	-------------

Data



Western blot of S-Tag fusion protein with anti-S tag antibody at dilution of 1:2000.

Observed Mw:40kDa

Calculated Mw:40kDa

Preparation & Storage

Storage Store at -20°C. Avoid freeze / thaw cycles.

Background

S tag is an epitope tag composed of a 15 residue peptide, KETAAAKFERQHMDs, derived from the pancreatic ribonuclease A. This interactive complex (S-tag/S-protein) results in micromolar affinity – dependent upon pH, temperature, and ionic strength . T

For Research Use Only

A Reliable Research Partner in Life Science and Medicine

Toll-free: 1-888-852-8623

Web: www.elabscience.com

Tel: 1-832-243-6086

Email: techsupport@elabscience.com

Fax: 1-832-243-6017