

Myc-Tag Polyclonal Antibody

Catalog Number:E-AB-40524



Note: Centrifuge before opening to ensure complete recovery of vial contents.

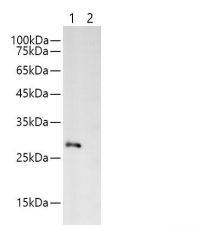
Description

Reactivity	All
Immunogen	Synthetic peptide corresponding to Myc tag conjugated to keyhole limpet haemocyanin.
Host	Rabbit
Isotype	IgG
Purification	Antigen Affinity Purification
Conjugation	Unconjugated
Formulation	PBS with 0.02% sodium azide, 50% glycerol,pH 7.4

Applications Recommended Dilution

WB	1:500-10000
-----------	-------------

Data



Western blotting with Anti-MYC rabbit polyclonal antibody at dilution of 1:1000.Lane1: MYC tag transfected HEK 293 whole cell lysate, Lane2: HEK 293 whole cell lysate
Observed Mw:28kDa
Calculated Mw:28kDa

Preparation & Storage

Storage Store at -20°C. Avoid freeze / thaw cycles.

Background

The MYC tag, derived from the c-MYC protein, is a popular epitope tag for detecting the expression of recombinant proteins in yeast, bacteria, insect, and mammalian cell systems. It can be used for affinity chromatography, then used to separate recombin

For Research Use Only

A Reliable Research Partner in Life Science and Medicine

Toll-free: 1-888-852-8623

Web: www.elabscience.com

Tel: 1-832-243-6086

Email: techsupport@elabscience.com

Fax: 1-832-243-6017