

# Flag-Tag Polyclonal Antibody

Catalog Number:E-AB-40525



**Note:** Centrifuge before opening to ensure complete recovery of vial contents.

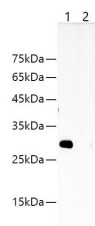
## Description

<b>Reactivity</b>	All
<b>Immunogen</b>	Synthetic peptide corresponding to Flag tag conjugated to keyhole limpet haemocyanin.
<b>Host</b>	Rabbit
<b>Isotype</b>	IgG
<b>Purification</b>	Antigen Affinity Purification
<b>Conjugation</b>	Unconjugated
<b>Formulation</b>	PBS with 0.02% sodium azide, 50% glycerol,pH 7.4

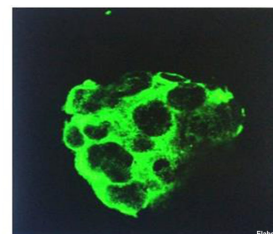
## Applications Recommended Dilution

<b>WB</b>	1:2000-5000
<b>IP</b>	3ug/sample
<b>IF</b>	1:6000-12000

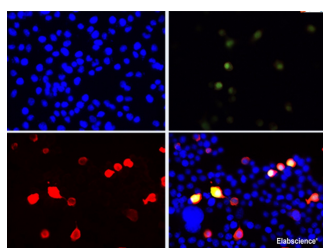
## Data



Western blotting with Anti-FLAG rabbit polyclonal antibody at dilution of 1:1000.Lane1: FLAG tag transfected HEK 293 whole cell lysate, Lane2: HEK 293 whole cell lysate  
**Observed Mw:28kDa**  
**Calculated Mw:28kDa**



Immunofluorescent analysis of Hela cells transfected with the plasmid overexpressing Flag fusion Protein, using anti-Flag -Tag polyclonal antibody at 1:200 dilution.



Immunofluorescent analysis of 293F cells transfected with the FLAG-GFP, using anti-Flag-Tag Polyclonal Antibody at dilution of 1:12000.



IP Result of 293F cells transfected with FLAG-Tag fusion protein,using anti-FLAG-Tag rabbit antibody .  
Lane 1:input, lane 2: rabbit IgG Isotype Control,  
Lane 3: anti-FLAG-Tag rabbit antibody

## Preparation & Storage

### For Research Use Only

A Reliable Research Partner in Life Science and Medicine

Toll-free: 1-888-852-8623

Web: [www.elabscience.com](http://www.elabscience.com)

Tel: 1-832-243-6086

Email: [techsupport@elabscience.com](mailto:techsupport@elabscience.com)

Fax: 1-832-243-6017

# Flag-Tag Polyclonal Antibody

Catalog Number:E-AB-40525



**Storage** Store at -20°C. Avoid freeze / thaw cycles.

## Background

FLAG-tag is a polypeptide protein tag that can be added to a protein using recombinant DNA technology, having the sequence motif DYKDDDDK. It has been used for studying proteins in living cells and for protein purification by affinity chromatography. This

---

## For Research Use Only

A Reliable Research Partner in Life Science and Medicine

Toll-free: 1-888-852-8623

Web: [www.elabscience.com](http://www.elabscience.com)

Tel: 1-832-243-6086

Email: [techsupport@elabscience.com](mailto:techsupport@elabscience.com)

Fax: 1-832-243-6017