

Caspase-1 Polyclonal Antibody

Catalog Number: E-AB-40529

1 Publications



Note: Centrifuge before opening to ensure complete recovery of vial contents.

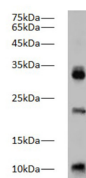
Description

Reactivity	Zebrafish
Immunogen	Synthetic peptide corresponding to Zebrafish caspase-1 conjugated to keyhole limpet haemocyanin.
Host	Rabbit
Isotype	IgG
Purification	Antigen Affinity Purification
Conjugation	Unconjugated
Formulation	PBS with 0.02% sodium azide, 50% glycerol, pH 7.4

Applications Recommended Dilution

WB	1:1000-2000
-----------	-------------

Data



Western blot of Zebrafish whole lysates with anti-Caspase-1 rabbit polyclonal antibody at dilution of 1:1000.

Observed Mw: 20kDa, 42kDa
Calculated Mw: 45, 42, 35, 22, 20kDa

Preparation & Storage

Storage Store at -20°C. Avoid freeze / thaw cycles.

Background

CASP1 (caspase-1) is also named as IL1BC, IL1BCE and belongs to the peptidase C14A family. It is a cysteine protease that regulates inflammatory processes through its capacity to process and activate the interleukin-1-beta (IL1B), IL18, and IL33 precursor

For Research Use Only

A Reliable Research Partner in Life Science and Medicine

Toll-free: 1-888-852-8623

Web: www.elabscience.com

Tel: 1-832-243-6086

Email: techsupport@elabscience.com

Fax: 1-832-243-6017