

Pan Acetyl-Lysine Polyclonal Antibody

Catalog Number:E-AB-40531



Note: Centrifuge before opening to ensure complete recovery of vial contents.

Description

Reactivity	All
Immunogen	Acetylated Protein
Host	Rabbit
Isotype	IgG
Purification	Antigen Affinity Purification
Conjugation	Unconjugated
Formulation	PBS with 0.02% sodium azide, 50% glycerol,pH 7.4

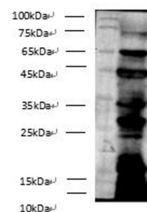
Applications Recommended Dilution

WB	1:1000-2000
-----------	-------------

Data



Dot blotting analysis of Pan Acetyl-Lysine polyclonal antibody on unmodified BSA and acetylated BSA at dilution of 1:2000.



Western blotting of anti-Pan Acetyl-Lysine polyclonal antibody on E.coli lysates at dilution of 1:500.

Preparation & Storage

Storage	Store at -20°C. Avoid freeze / thaw cycles.
----------------	---

Background

Acetylation is an important modification of proteins in cell biology. Acetylation occurs in thousands of proteins involved in control of cell cycle and metabolism, longevity, actin polymerization, and nuclear transport. Among these proteins, chromatin pro

For Research Use Only

A Reliable Research Partner in Life Science and Medicine

Toll-free: 1-888-852-8623

Web: www.elabsience.com

Tel: 1-832-243-6086

Email: techsupport@elabsience.com

Fax: 1-832-243-6017