

# m6A Polyclonal Antibody

Catalog Number:E-AB-40550

**Note:** Centrifuge before opening to ensure complete recovery of vial contents.

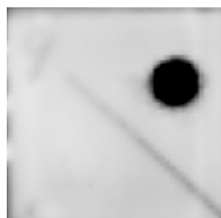
## Description

<b>Reactivity</b>	E.coli
<b>Immunogen</b>	N6-methyladenosine conjugated to KLH
<b>Host</b>	Rabbit
<b>Isotype</b>	IgG
<b>Purification</b>	Antigen Affinity Purification
<b>Conjugation</b>	Unconjugated
<b>Formulation</b>	PBS with 0.02% sodium azide, 50% glycerol,pH 7.4

## Applications Recommended Dilution

<b>Dot Blot</b>	1:500-1000
-----------------	------------

## Data



Dot blot of 100 ng of genomic DNA from Dam + and Dam - E.coli strains have been spotted and probed with anti-m6A polyclonal Antibody at dilution 1 : 500. UP: Dam +, Down: Dam -

## Preparation & Storage

**Storage** Store at -20°C. Avoid freeze / thaw cycles.

## Background

N6-methyladenosine (m6A) is the most prevalent, abundant and conserved internal cotranscriptional modification in eukaryotic RNAs, especially within higher eukaryotic cells. Recent studies have shown that m6A RNA modification plays essential role in both physiological and pathological conditions, especially in the initiation and progression of different types of human cancers.

## For Research Use Only

A Reliable Research Partner in Life Science and Medicine

Toll-free: 1-888-852-8623

Web: [www.elabscience.com](http://www.elabscience.com)

Tel: 1-832-243-6086

Email: [techsupport@elabscience.com](mailto:techsupport@elabscience.com)

Fax: 1-832-243-6017