

# Sumo-Tag Polyclonal Antibody

Catalog Number:E-AB-40553



**Note:** Centrifuge before opening to ensure complete recovery of vial contents.

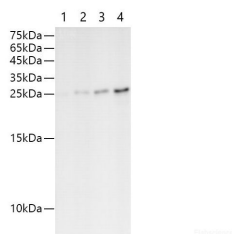
## Description

<b>Reactivity</b>	All
<b>Immunogen</b>	Recombinant Sumo protein
<b>Host</b>	Rabbit
<b>Isotype</b>	IgG
<b>Purification</b>	Antigen Affinity Purification
<b>Conjugation</b>	Unconjugated
<b>Formulation</b>	PBS with 0.02% sodium azide, 50% glycerol,pH 7.4

## Applications Recommended Dilution

<b>WB</b>	1:500-1000
-----------	------------

## Data



Western blot of Sumo-tag fusion protein with anti-Sumo polyclonal antibody at dilution of 1:1000. Lane 1 : Recombinant SUMO protein at 6.25ng; Lane 2 : Recombinant SUMO protein at 12.5ng; Lane 3: Recombinant SUMO protein at 25ng; Lane 4: Recombinant SUMO protein at 50ng

**Observed Mw:26kDa**  
**Calculated Mw:26kDa**

## Preparation & Storage

**Storage** Store at -20°C. Avoid freeze / thaw cycles.

## Background

SUMO is short for Small Ubiquitin-like Modifier, the 100 amino acid sequence, which is necessary for regulation of protein transport and is important for controlling transcription for eukaryotic cells. Sumo tag is most frequently used as N-end fus

## For Research Use Only

A Reliable Research Partner in Life Science and Medicine

Toll-free: 1-888-852-8623

Web: [www.elabscience.com](http://www.elabscience.com)

Tel: 1-832-243-6086

Email: [techsupport@elabscience.com](mailto:techsupport@elabscience.com)

Fax: 1-832-243-6017