

Recombinant Mouse CCL4 protein(His Tag)

Catalog Number:PKSM041505



Note: Centrifuge before opening to ensure complete recovery of vial contents.

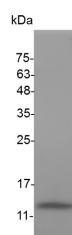
Description

Synonyms	4-1BB;4-1BB-;4-1BB-L;4-1BBL;AI848817;Cd137;Cd137l;Ly6;Ly63l;tumor necrosis factor (ligand) superfamily;member 9;Tnfsf9
Species	Mouse
Expression Host	E.coli
Sequence	Ala 24-Asn 92
Accession	P14097
Calculated Molecular Weight	8.6 kDa
Observed molecular weight	11-17 kDa
Tag	N-His
Bioactivity	Measure by its ability to chemoattract human PBMCs using a concentration range of 20.0 - 200.0 ng/mL. Note: Results may vary from different PBMC donors.

Properties

Purity	> 98 % as determined by reducing SDS-PAGE.
Endotoxin	< 0.1 EU per µg of the protein as determined by the LAL method.
Storage	Generally, lyophilized proteins are stable for up to 12 months when stored at -20 to -80°C. Reconstituted protein solution can be stored at 4-8°C for 2-7 days. Aliquots of reconstituted samples are stable at < -20°C for 3 months.
Shipping	This product is provided as lyophilized powder which is shipped with ice packs.
Formulation	Lyophilized from sterile PBS, pH 7.4. Normally 5 % - 8 % trehalose, mannitol and 0.01 % Tween80 are added as protectants before lyophilization. Please refer to the specific buffer information in the printed manual.
Reconstitution	Please refer to the printed manual for detailed information.

Data



> 98 % as determined by reducing SDS-PAGE.

Background

CCL4 (C-C chemokine ligand 4), is a macrophage inflammatory protein with a chief effect in inflammation and immune-regulation, and was documented in cancer progression by promoting instability in the tumor environment. The inflammatory chemokine (C-C motif) ligand 4 (CCL4) plays an important role in the pathogenesis and progression of cancer. In particular, higher serum CCL4 levels in patients with oral squamous cell carcinoma (OSCC) are associated with a more advanced stage of disease. CCL4 may be a new molecular therapeutic target for inhibition of lymphangiogenesis

For Research Use Only

A Reliable Research Partner in Life Science and Medicine

Toll-free: 1-888-852-8623

Web: www.elabscience.com

Tel: 1-832-243-6086

Email: techsupport@elabscience.com

Fax: 1-832-243-6017

Recombinant Mouse CCL4 protein(His Tag)

Catalog Number:PKSM041505



and metastasis in OSCC. CCL3 and CCL4 loci may be marker SNPs for risk of HCV treatment outcome. CCL4 can enhance the recruitment of preosteoclasts to bone in the early stage, and the reduction of CCR5 promotes osteoclastogenesis when RANKL is prevalent.

For Research Use Only

A Reliable Research Partner in Life Science and Medicine

Toll-free: 1-888-852-8623

Tel: 1-832-243-6086

Fax: 1-832-243-6017

Web: www.elabscience.com

Email: techsupport@elabscience.com