

Cys-C Polyclonal Antibody

Catalog Number:E-AB-40575



Note: Centrifuge before opening to ensure complete recovery of vial contents.

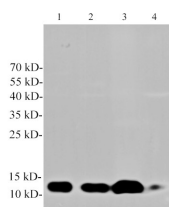
Description

| | |
|---------------------|--|
| Reactivity | Human,Mouse,Rat |
| Immunogen | Recombinant Human Cys-C protein expressed by E.coli. |
| Host | Rabbit |
| Isotype | IgG |
| Purification | Antigen Affinity Purification |
| Conjugation | Unconjugated |
| Formulation | PBS with 0.02% sodium azide, 50% glycerol,pH 7.4 |

Applications Recommended Dilution

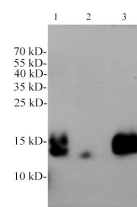
WB 1:1000-2000

Data



Western blotting with anti-Cys-C polyclonal antibody at dilution of 1:1000. Lane 1: HepG2 cell lysate, lane 2: PC-3 cell lysate, lane 3: CaCo2 cell lysate, lane 4: Mouse kidney lysate.

Observed Mw:13kDa
Calculated Mw:13kDa



Western blotting with anti-Cys-C polyclonal antibody at dilution of 1:1000. Lane 1: Rat kidney lysate, lane 2: Rat liver lysate, lane 3: Rat plasma.

Preparation & Storage

Storage Store at -20°C. Avoid freeze / thaw cycles.

Background

Cystatin C is a member of family 2 of the Cystatin superfamily . It is involved in processes such as tumor invasion and metastasis, inflammation and some neurological diseases. It inhibits many cysteine proteases such as papain and cathepsins B, H, K, L, and S.

For Research Use Only

A Reliable Research Partner in Life Science and Medicine

Toll-free: 1-888-852-8623

Web: www.elabscience.com

Tel: 1-832-243-6086

Email: techsupport@elabscience.com

Fax: 1-832-243-6017