

## Elab Fluor® 647 Anti-Mouse CD23 Antibody[B3B4]

<b>Catalog No.</b>	E-AB-F1178M	<b>Reactivity</b>	Mouse
<b>Storage</b>	Store at 2~8°C, Avoid freeze / thaw cycles	<b>Applications</b>	FCM

**Important Note:** Centrifuge before opening to ensure complete recovery of vial contents.

### Antigen Information

<b>Alternate Names</b>	Fcεr2,Fcεr2a,Lymphocyte IgE receptor,Fc-epsilon-RII
<b>Uniprot ID</b>	P20693
<b>Gene ID</b>	14128
<b>Background</b>	CD23 is a 45 kD protein also known as low affinity IgE Fc receptor, FcεRII, BLAST-2, Ly-42, or B6. It is a member of the Ig family, expressed on conventional B (but not B-1) cells and follicular dendritic cells. CD23 responds to high levels of IgE by downregulating IgE secretion.

### Product Details

<b>Form</b>	Liquid
<b>Size</b>	50Tests/100Tests/100Tests×2
<b>Clone No.</b>	B3B4
<b>Host</b>	Rat
<b>Isotype</b>	Rat IgG2a, κ
<b>Reactivity</b>	Mouse
<b>Application</b>	FCM
<b>Isotype Control</b>	<a href="#">Elab Fluor® 647 Rat IgG2a, κ Isotype Control[2A3] [Product E-AB-F09832M]</a>
<b>Storage Buffer</b>	Phosphate buffered solution, pH 7.2, containing 0.09% stabilizer and 1% protein protectant.
<b>Shipping</b>	Biological ice pack at 4 °C
<b>Stability &amp; Storage</b>	Keep as concentrated solution. Store at 2~8°C and protected from prolonged exposure to light.Do not freeze. This product is guaranteed up to one year from purchase.

### For Research Use Only

## Fluorophore

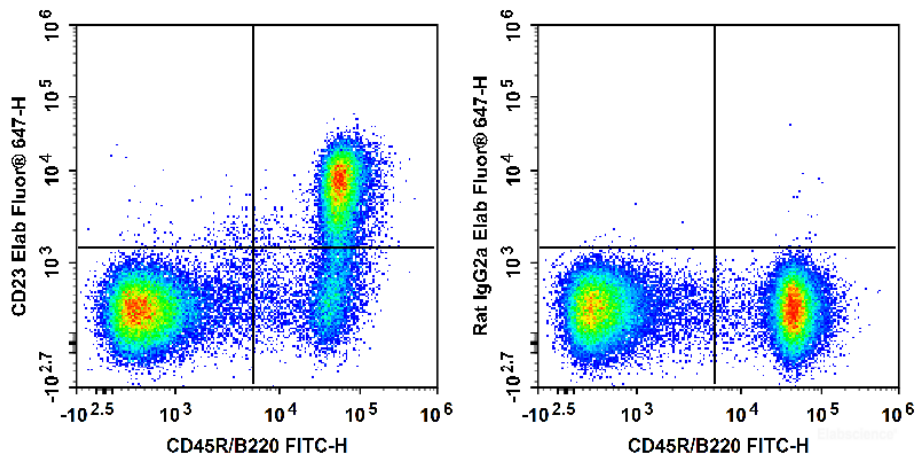
**Conjugation:** Elab Fluor® 647

Elab Fluor® 647 is designed to be excited by the Red laser (627-640 nm) and detected using an optical filter centered near 670 nm (e.g., a 660/20 nm bandpass filter).

## Recommended usage

Each lot of this antibody is quality control tested by flow cytometric analysis. **The amount of the reagent is suggested to be used 5 µL of antibody per test (million cells in 100 µL staining volume or per 100 µL of whole blood).** Please check your vial before the experiment. Since applications vary, the appropriate dilutions must be determined for individual use.

## Product data



C57BL/6 murine splenocytes are stained with FITC Anti-Mouse CD45R/B220 Antibody and Elab Fluor® 647 Anti-Mouse CD23 Antibody (Left). Splenocytes are stained with FITC Anti-Mouse CD45R/B220 Antibody and Elab Fluor® 647 Rat IgG2a, κ Isotype Control[2A3] (Right).

## Related Information

1. Sample Preparation for Flow Cytometry <https://www.elabscience.com/List-detail-5594.html>
2. Staining Cell Surface Targets for Flow Cytometry <https://www.elabscience.com/List-detail-5568.html>
3. Flow Cytometry Troubleshooting Tips <https://www.elabscience.com/List-detail-5593.html>
4. How to select the appropriate detection channel through the spectrogram? <https://www.elabscience.com/List-detail-459742.html>

## For Research Use Only