

Biotin Anti-Mouse CD31 Antibody[390]

| | | | |
|--------------------|--|---------------------|-------|
| Catalog No. | E-AB-F1180B | Reactivity | Mouse |
| Storage | Store at 2~8°C, Avoid freeze / thaw cycles | Applications | FCM |

Important Note: Centrifuge before opening to ensure complete recovery of vial contents.

Antigen Information

| | |
|------------------------|---|
| Alternate Names | Pecam, Pecam-1, PECAM-1, CD31 |
| Uniprot ID | Q08481 |
| Gene ID | 18613 |
| Background | CD31 is a 130-140 kD glycoprotein, also known as platelet endothelial cell adhesion molecule (PECAM-1) and EndoCAM. It is a member of the Ig superfamily, expressed on endothelial cells, platelets, granulocytes, monocytes/macrophages, dendritic cells, and T and B cell subsets, and is critical for cell-cell interactions. The primary ligands for CD31 have been reported to be CD38 and the vitronectin receptor (α v β 3 integrin, CD51/CD61). Other reported functions of CD31 are neutrophil emigration to sites of inflammation and angiogenesis. |

Product Details

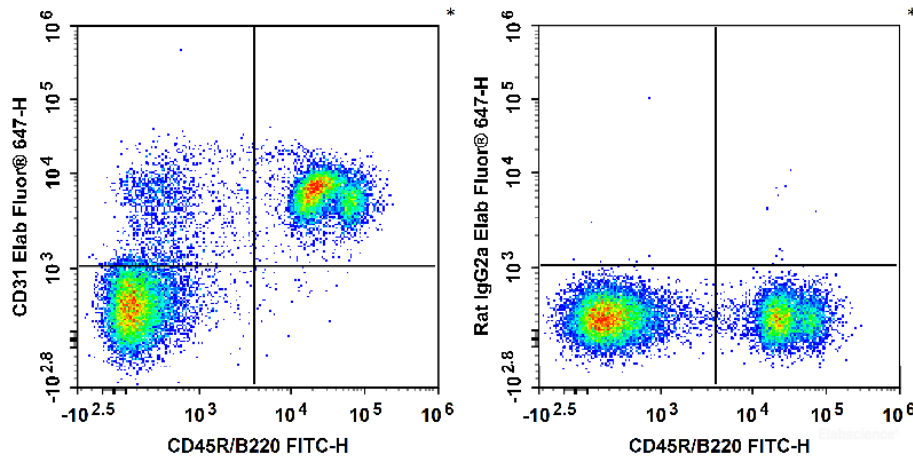
| | |
|--------------------------------|--|
| Form | Liquid |
| Concentration | 0.5 mg/mL |
| Size | 25 μ g/100 μ g |
| Clone No. | 390 |
| Host | Rat |
| Isotype | Rat IgG2a, κ |
| Reactivity | Mouse |
| Application | FCM |
| Isotype Control | Biotin Rat IgG2a, κ Isotype Control[2A3] [Product E-AB-F09833B] |
| Storage Buffer | Phosphate buffered solution, pH 7.2, containing 0.09% stabilizer and 1% protein protectant. |
| Shipping | Biological ice pack at 4 °C |
| Stability & Storage | Keep as concentrated solution. Store at 2~8°C .Do not freeze. This product is guaranteed up to one year from purchase. |

For Research Use Only

Recommended usage

Each lot of this antibody is quality control tested by flow cytometric analysis. For flow cytometric staining, the suggested use of this reagent is $\leq 1.0 \mu\text{g}$ per 10^6 cells in $100 \mu\text{L}$ volume or $100 \mu\text{L}$ of whole blood. It is recommended that the reagent be titrated for optimal performance for each application.

Product data



C57BL/6 murine bone marrow cells are stained with FITC Anti-Mouse CD45R/B220 Antibody and Biotin Anti-Mouse CD31 Antibody followed by Streptavidin-Elab Fluor® 647 (Left). Bone marrow cells are stained with FITC Anti-Mouse CD45R/B220 Antibody and Biotin Rat IgG2a, κ Isotype Control followed by Streptavidin-Elab Fluor® 647 (Right).

Related Information

1. Sample Preparation for Flow Cytometry <https://www.elabscience.com/List-detail-5594.html>
2. Staining Cell Surface Targets for Flow Cytometry <https://www.elabscience.com/List-detail-5568.html>
3. Flow Cytometry Troubleshooting Tips <https://www.elabscience.com/List-detail-5593.html>
4. How to select the appropriate detection channel through the spectrogram? <https://www.elabscience.com/List-detail-459742.html>