

Recombinant Human GHRL protein(His tag)

Catalog Number:PDEH100094



Note: Centrifuge before opening to ensure complete recovery of vial contents.

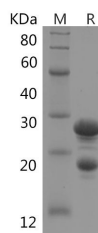
Description

Synonyms	Growth hormone secretagogue;Growth hormone-releasing peptide;Motilin-related peptide;Protein M46;Ghrelin
Species	Human
Expression Host	E.coli
Sequence	Gly24-Leu98
Accession	Q9UBU3
Calculated Molecular Weight	19.3 kDa
Observed molecular weight	19 kDa&29 kDa
Tag	N-His-SUMO

Properties

Purity	> 85 % as determined by reducing SDS-PAGE.
Endotoxin	Please contact us for more information.
Storage	Generally, lyophilized proteins are stable for up to 12 months when stored at -20 to -80°C. Reconstituted protein solution can be stored at 4-8°C for 2-7 days. Aliquots of reconstituted samples are stable at < -20°C for 3 months.
Shipping	This product is provided as lyophilized powder which is shipped with ice packs.
Formulation	Lyophilized from sterile PBS, pH 7.4. Normally 5 % - 8 % trehalose, mannitol and 0.01 % Tween80 are added as protectants before lyophilization. Please refer to the specific buffer information in the printed manual.
Reconstitution	Please refer to the printed manual for detailed information.

Data



> 85 % as determined by reducing SDS-PAGE.

Background

Ghrelin is the ligand for growth hormone secretagogue receptor type 1 (GHSR).Induces the release of growth hormone from the pituitary.Has an appetite-stimulating effect, induces adiposity and stimulates gastric acid secretion. Involved in growth regulation.

For Research Use Only

A Reliable Research Partner in Life Science and Medicine

Toll-free: 1-888-852-8623

Web: www.elabscience.com

Tel: 1-832-243-6086

Email: techsupport@elabscience.com

Fax: 1-832-243-6017