

Lutropin subunit beta/LHB Polyclonal Antibody

Catalog Number:E-AB-40638



Note: Centrifuge before opening to ensure complete recovery of vial contents.

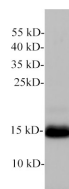
Description

Reactivity	Mouse,Rat
Immunogen	Recombinant Mouse LHB protein expressed by E.coli.
Host	Rabbit
Isotype	IgG
Purification	Antigen Affinity Purification
Conjugation	Unconjugated
Formulation	PBS with 0.02% sodium azide,50% glycerol,pH 7.4

Applications Recommended Dilution

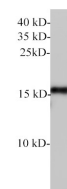
WB	1:500-1:1000
-----------	--------------

Data



Western blot of Mouse pancreas with anti-Lutropin subunit beta polyclonal antibody at 1:1000 dilution.

Observed Mw:15 kDa
Calculated Mw:15 kDa



Western blot of Rat pituitary with Lutropin subunit beta polyclonal antibody at 1:1000 dilution.

Preparation & Storage

Storage Store at -20°C. Avoid freeze / thaw cycles.

Background

Luteinizing Hormone (LH) is a 42 kDa heterodimer belonging to the glycoprotein hormone family. It is composed of noncovalently linked glycosylated alpha and beta chains. The alpha subunit (CG alpha) is also a component of Follicle-Stimulating Hormone (FSH),Thyroid-Stimulating Hormone,and Chorionic Gonadotropin. The unique beta subunit confers the protein's specific biological action and is responsible for the interaction with its receptor.

For Research Use Only

A Reliable Research Partner in Life Science and Medicine

Toll-free: 1-888-852-8623

Web: www.elabscience.com

Tel: 1-832-243-6086

Email: techsupport@elabscience.com

Fax: 1-832-243-6017