

# GTPase Kras Polyclonal Antibody

Catalog Number:E-AB-40639



**Note:** Centrifuge before opening to ensure complete recovery of vial contents.

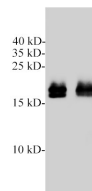
## Description

<b>Reactivity</b>	Human,Mouse,Rat
<b>Immunogen</b>	Recombinant Human KRAS protein expressed by E.coli.
<b>Host</b>	Rabbit
<b>Isotype</b>	IgG
<b>Purification</b>	Antigen Affinity Purification
<b>Conjugation</b>	Unconjugated
<b>Formulation</b>	PBS with 0.02% sodium azide,50% glycerol,pH 7.4

## Applications Recommended Dilution

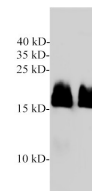
<b>WB</b>	1:1000-1:2000
-----------	---------------

## Data



Western blotting with anti-KRAS polyclonal Antibody at dilution of 1:1000. Lane 1: HeLa cell lysates, lane 2: Mouse heart lysate.

**Observed Mw:21 kDa**  
**Calculated Mw:21 kDa**



Western blotting with anti-KRAS polyclonal Antibody at dilution of 1:1000. Lane 1: Rat heart lysates, lane 2:Rat skeletal muscle lysate.

## Preparation & Storage

**Storage** Store at -20°C. Avoid freeze / thaw cycles.

## Background

KRAS,also called p21,is a member of the Ras superfamily of proteins. It is located on human chromosome 12,and contains four coding exons and a 5' non-coding exon (PMID: 12778136). KRAS is a membrane-anchored guanosine triphosphate/guanosine diphosphate (GTP/GDP)-binding protein and is widely expressed in most human cells. Like other members of the Ras family,the KRAS protein is a GTPase,and it is involved in intracellular signal transduction and mainly responsible for EGFR-signaling activation (PMID: 19117687). KRAS mutations have been found in various malignancies,including lung adenocarcinoma,mucinous adenoma,ductal carcinoma of the pancreas and colorectal carcinoma.

## For Research Use Only

A Reliable Research Partner in Life Science and Medicine

Toll-free: 1-888-852-8623

Web: [www.elabscience.com](http://www.elabscience.com)

Tel: 1-832-243-6086

Email: [techsupport@elabscience.com](mailto:techsupport@elabscience.com)

Fax: 1-832-243-6017