

Carboxypeptidase B2 Polyclonal Antibody

Catalog Number:E-AB-40640



Note: Centrifuge before opening to ensure complete recovery of vial contents.

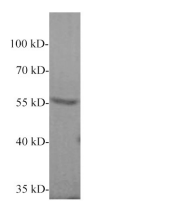
Description

Reactivity	Human
Immunogen	Recombinant Human CPB2 protein expressed by E.coli.
Host	Rabbit
Isotype	IgG
Purification	Antigen Affinity Purification
Conjugation	Unconjugated
Formulation	PBS with 0.02% sodium azide,50% glycerol,pH 7.4

Applications Recommended Dilution

WB	1:250-1:500
-----------	-------------

Data



Western blot of Human plasma with anti-CPB2 polyclonal antibody at 1:1000 dilution.

Observed Mw:56 kDa
Calculated Mw:48 kDa

Preparation & Storage

Storage Store at -20°C. Avoid freeze / thaw cycles.

Background

CPB2 (Carboxypeptidase B2; also CPU and TAFI) is a secreted,50-60 kDa glycoprotein member of the peptidase M14 family of enzymes. It is expressed by hepatocytes (60 kDa) and platelets (50 kDa),with MW differences attributable to glycosylation. CPB2 is cleaved by thrombin and plasmin,generating a 36 kDa,relatively insoluble nonglycosylated enzymatically active fragment (TAFIa).

For Research Use Only

A Reliable Research Partner in Life Science and Medicine

Toll-free: 1-888-852-8623

Web: www.elabscience.com

Tel: 1-832-243-6086

Email: techsupport@elabscience.com

Fax: 1-832-243-6017