

# NEFL Polyclonal Antibody

Catalog Number:E-AB-40641



**Note:** Centrifuge before opening to ensure complete recovery of vial contents.

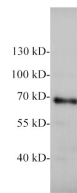
## Description

|                     |   |
|---------------------|---|
| <b>Reactivity</b>   | Mouse   |
| <b>Immunogen</b>    | Recombinant Human NEFL protein expressed by E.coli. |
| <b>Host</b>         | Rabbit  |
| <b>Isotype</b>      | IgG   |
| <b>Purification</b> | Antigen Affinity Purification                       |
| <b>Conjugation</b>  | Unconjugated  |
| <b>Formulation</b>  | PBS with 0.02% sodium azide,50% glycerol,pH 7.4     |

## Applications Recommended Dilution

|           |              |
|-----------|--------------|
| <b>WB</b> | 1:500-1:1000 |
|-----------|--------------|

## Data



Western blot of Mouse brain with anti-NEFL polyclonal antibody at 1:1000 dilution.

**Observed Mw:69 kDa**  
**Calculated Mw:61 kDa**

## Preparation & Storage

**Storage** Store at -20°C. Avoid freeze / thaw cycles.

## Background

Neurofilaments usually contain three intermediate filament proteins: NEFL,NEFM,and NEFH which are involved in the maintenance of neuronal caliber. May additionally cooperate with the neuronal intermediate filament proteins PRPH and INA to form neuronal filamentous networks.

## For Research Use Only

A Reliable Research Partner in Life Science and Medicine

Toll-free: 1-888-852-8623

Web: [www.elabscience.com](http://www.elabscience.com)

Tel: 1-832-243-6086

Email: [techsupport@elabscience.com](mailto:techsupport@elabscience.com)

Fax: 1-832-243-6017