

Serpin A1 Polyclonal Antibody

Catalog Number:E-AB-40634



Note: Centrifuge before opening to ensure complete recovery of vial contents.

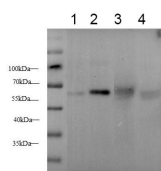
Description

Reactivity	Human,Mouse,Rat
Immunogen	Recombinant Rat Serpin A1 protein expressed by E.coli
Host	Rabbit
Isotype	IgG
Purification	Antigen Affinity Purification
Conjugation	Unconjugated
Formulation	PBS with 0.02% sodium azide,50% glycerol,pH 7.4

Applications Recommended Dilution

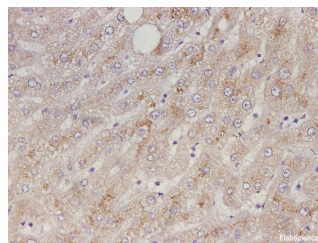
WB	1:100-1:200
IHC	1:2000-1:4000

Data



Western blot with anti-alpha 1 Antitrypsin Polyclonal antibody at dilution of 1:200.lane 1: Rat kidney tissue, lane 2:Mouse liver tissue, lane 3: Human plasma, lane 4:HepG2 whole cell lysate

Observed Mw:60kDa
Calculated Mw:46kDa



Immunohistochemistry of paraffin-embedded Human liver tissue using Serpin A1 Polyclonal Antibody at dilution of 1:3500(×400)

Preparation & Storage

Storage Store at -20°C. Avoid freeze / thaw cycles.

Background

Serpin A1 is the archetypal member of the Serpin superfamily of the serine protease inhibitors. As one of the most abundant proteinase inhibitors in the circulation, it is synthesized in the liver and secreted into the bloodstream with the major function to protect tissues against neutrophil elastase. A severe Serpin A1 deficiency leads to several clinical complications such as pulmonary emphysema, juvenile hepatitis, cirrhosis, and hepatocellular carcinoma .

For Research Use Only

A Reliable Research Partner in Life Science and Medicine

Toll-free: 1-888-852-8623

Web: www.elabscience.com

Tel: 1-832-243-6086

Email: techsupport@elabscience.com

Fax: 1-832-243-6017