

Elab Fluor® Red 780 Anti-Mouse CD48 Antibody[HM48-1]

Catalog No.	E-AB-F1017US	Reactivity	Mouse
Storage	Store at 2~8°C, Avoid freeze / thaw cycles	Applications	FCM

Important Note: Centrifuge before opening to ensure complete recovery of vial contents.

Antigen Information

Alternate Names	CD48 antigen,Cd48,BCM1 surface antigen,BLAST-1,HM48-1,MRC OX-45 surface antigen,SLAMF2,sgp-60,CD48
Uniprot ID	P18181
Gene ID	12506
Background	CD48 is a 45 kD GPI-anchored glycoprotein also known as BCM1, Blast-1 (human), and OX-45 (rat). It is a member of the Ig superfamily, expressed on T and B cells and monocytes/macrophages. It plays a role in adhesion and T cell recognition. The primary ligands for CD48 are CD2 and CD244.

Product Details

Form	Liquid
Concentration	0.5 mg/mL
Size	25µg/100µg
Clone No.	HM48-1
Host	Armenian Hamster
Isotype	Armenian Hamster IgG
Reactivity	Mouse
Application	FCM
Isotype Control	Elab Fluor® Red 780 Armenian Hamster IgG Isotype Control[PIP] [Product E-AB-F09853S]
Storage Buffer	Phosphate buffered solution, pH 7.2, containing 0.09% stabilizer and 1% protein protectant.
Shipping	Biological ice pack at 4 °C
Stability & Storage	Keep as concentrated solution. Store at 2~8°C and protected from prolonged exposure to light.Do not freeze. This product is guaranteed up to one year from purchase.

Fluorophore

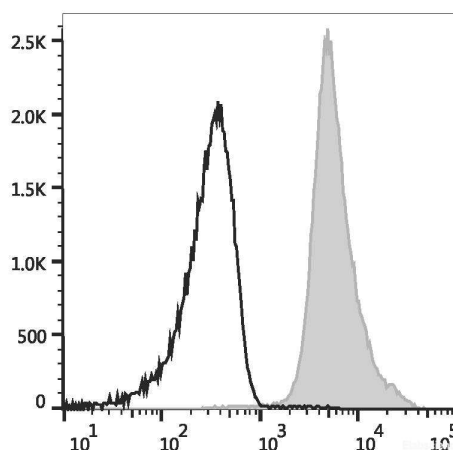
Conjugation: Elab Fluor® Red 780

Elab Fluor® Red 780 is designed to be excited by the Red (627-640 nm) laser and detected using an optical filter centered near 770 nm (e.g., a 780/60 nm bandpass filter).

Recommended usage

Each lot of this antibody is quality control tested by flow cytometric analysis. Please check your vial before the experiment. Since applications vary, the appropriate dilutions must be determined for individual use. We suggest each investigator should titrate the reagent to obtain optimal results [The recommended concentration is 0.1-1 $\mu\text{g}/10^6$ cells in 100 μL volume].

Product data



C57BL/6 murine splenocytes are stained with Elab Fluor® Red 780 Anti-Mouse CD48 Antibody (filled gray histogram) or Elab Fluor® Red 780 Armenian Hamster IgG Isotype Control (empty black histogram).

Related Information

1. Sample Preparation for Flow Cytometry <https://www.elabscience.com/List-detail-5594.html>
2. Staining Cell Surface Targets for Flow Cytometry <https://www.elabscience.com/List-detail-5568.html>
3. Flow Cytometry Troubleshooting Tips <https://www.elabscience.com/List-detail-5593.html>
4. How to select the appropriate detection channel through the spectrogram? <https://www.elabscience.com/List-detail-459742.html>