

**Elab Fluor® 647 Anti-Mouse CD150/SLAM Antibody[TC15-12F12.2]**

|                    |  |                     |       |
|--------------------|--|---------------------|-------|
| <b>Catalog No.</b> | E-AB-F1177M                                | <b>Reactivity</b>   | Mouse |
| <b>Storage</b>     | Store at 2~8°C, Avoid freeze / thaw cycles | <b>Applications</b> | FCM   |

**Important Note:** Centrifuge before opening to ensure complete recovery of vial contents.

**Antigen Information**

|                        |   |
|------------------------|---|
| <b>Alternate Names</b> | Slam,Slamf1,CD 150,Signaling lymphocytic activation molecule  |
| <b>Uniprot ID</b>      | Q9QUM4  |
| <b>Gene ID</b>         | 27218   |
| <b>Background</b>      | CD150 is a 75-95 kD member of the immunoglobulin superfamily, also known as SLAM (signaling lymphocyte activation molecule) or IPO-3. CD150, a single chain type I transmembrane molecule, is expressed on thymocytes, T cell subsets, B cells, dendritic cells, and endothelial cells. The expression is upregulated upon activation. CD150 expression has been shown to be maintained on Th1 but not Th2 clones. T regulatory cells express a relatively high level of CD150. Antibodies against CD150 have been shown to augment IFN- $\gamma$ production by Th1 cells, especially when co-stimulated through the TCR. CD150 associates with the src homology 2-domain-containing protein tyrosine phosphatase SHP-2, and this association is thought to be involved in signal transduction. In combination with CD48, CD150 is a useful marker for hematopoietic stem cell studies. |

**Product Details**

|                                |  |
|--------------------------------|--|
| <b>Form</b>                    | Liquid   |
| <b>Size</b>                    | 50Tests/100Tests/100Tests $\times$ 2   |
| <b>Clone No.</b>               | TC15-12F12.2   |
| <b>Host</b>                    | Rat  |
| <b>Isotype</b>                 | Rat IgG2a, $\lambda$   |
| <b>Reactivity</b>              | Mouse  |
| <b>Application</b>             | FCM  |
| <b>Isotype Control</b>         | <a href="#">Elab Fluor® 647 Rat IgG2a, <math>\lambda</math> Isotype Control[B39-4] [Product E-AB-F09742M]</a>  |
| <b>Storage Buffer</b>          | Phosphate buffered solution, pH 7.2, containing 0.09% stabilizer and 1% protein protectant.  |
| <b>Shipping</b>                | Biological ice pack at 4 °C  |
| <b>Stability &amp; Storage</b> | Keep as concentrated solution.<br>Store at 2~8°C and protected from prolonged exposure to light.Do not freeze.<br>This product is guaranteed up to one year from purchase. |

**For Research Use Only**

## Fluorophore

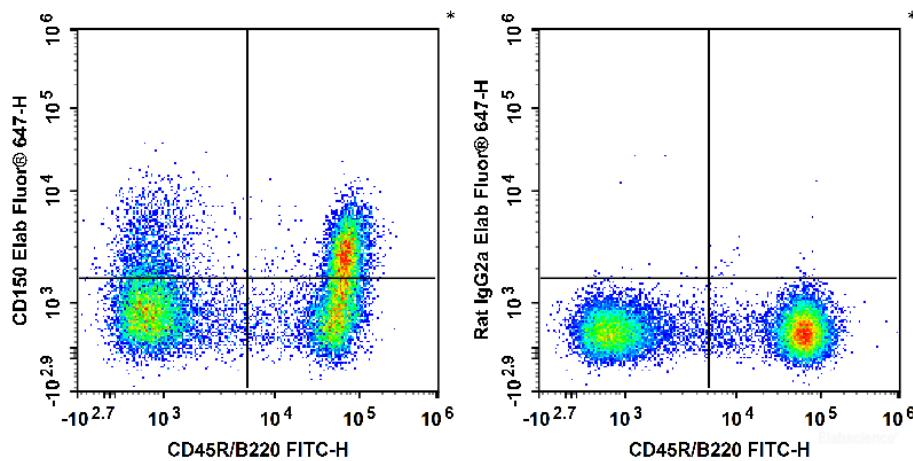
**Conjugation:** Elab Fluor® 647

Elab Fluor® 647 is designed to be excited by the Red laser (627-640 nm) and detected using an optical filter centered near 670 nm (e.g., a 660/20 nm bandpass filter).

## Recommended usage

Each lot of this antibody is quality control tested by flow cytometric analysis. **The amount of the reagent is suggested to be used 5 µL of antibody per test (million cells in 100 µL staining volume or per 100 µL of whole blood).** Please check your vial before the experiment. Since applications vary, the appropriate dilutions must be determined for individual use.

## Product data



C57BL/6 murine splenocytes are stained with FITC Anti-Mouse CD45R/B220 Antibody and Elab Fluor® 647 Anti-Mouse CD150 Antibody (Left). Splenocytes are stained with FITC Anti-Mouse CD45R/B220 Antibody and Elab Fluor® 647 Rat IgG2a, λ Isotype Control (Right).

## Related Information

1. Sample Preparation for Flow Cytometry <https://www.elabscience.com/List-detail-5594.html>
2. Staining Cell Surface Targets for Flow Cytometry <https://www.elabscience.com/List-detail-5568.html>
3. Flow Cytometry Troubleshooting Tips <https://www.elabscience.com/List-detail-5593.html>
4. How to select the appropriate detection channel through the spectrogram? <https://www.elabscience.com/List-detail-459742.html>

## For Research Use Only