

FITC Anti-Mouse CD200/OX2 Antibody[OX-90]

Catalog No.	E-AB-F1234UC	Reactivity	Mouse
Storage	Store at 2~8°C, Avoid freeze / thaw cycles	Applications	FCM

Important Note: Centrifuge before opening to ensure complete recovery of vial contents.

Antigen Information

Alternate Names	OX-2 membrane glycoprotein, OX-2, MRC
Uniprot ID	O54901
Gene ID	4345
Background	CD200 (OX-2 antigen) is a type-1 membrane glycoprotein containing two extracellular Ig-like domains. CD200 a highly conserved type I membrane glycoprotein that is expressed on a variety of cell types including thymocytes, some T cells, endothelial and follicular dendritic cells, B cells, and brain tissue (neurons); but not on NK cells, granulocytes, monocytes, or macrophages. CD200 costimulates T cell proliferation. It may regulate myeloid cell activity in a variety of tissues. CD200 is the ligand for CD200 receptor (CD200R). The CD200 Receptor is restricted to myeloid cells, and it is believed that its engagement with CD200 results in inhibition and/or downregulation of myeloid cell activity. Blocking of CD200/CD200R interactions decreases myeloid cell inhibitory thresholds which results in enhanced immune activation.

Product Details

Form	Liquid
Concentration	0.5 mg/mL
Size	25µg/100µg
Clone No.	OX-90
Host	Rat
Isotype	Rat IgG2a, κ
Reactivity	Mouse
Application	FCM
Isotype Control	FITC Rat IgG2a, κ Isotype Control[2A3] [Product E-AB-F09833C]
Storage Buffer	Phosphate buffered solution, pH 7.2, containing 0.09% stabilizer and 1% protein protectant.
Shipping	Biological ice pack at 4 °C
Stability & Storage	Keep as concentrated solution. Store at 2~8°C and protected from prolonged exposure to light. Do not freeze. This product is guaranteed up to one year from purchase.

For Research Use Only

Fluorophore

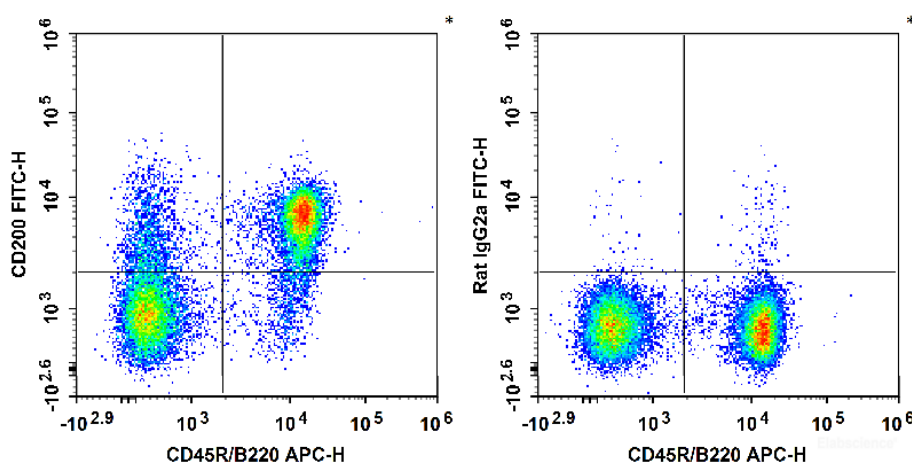
Conjugation: FITC

FITC is designed to be excited by the Blue laser (488 nm) and detected using an optical filter centered near 530 nm (e.g., a 525/40 nm bandpass filter).

Recommended usage

Each lot of this antibody is quality control tested by flow cytometric analysis. Please check your vial before the experiment. Since applications vary, the appropriate dilutions must be determined for individual use. We suggest each investigator should titrate the reagent to obtain optimal results [The recommended concentration is 0.1-1 $\mu\text{g}/10^6$ cells in 100 μL volume].

Product data



C57BL/6 murine splenocytes are stained with APC Anti-Mouse CD45R/B220 Antibody and FITC Anti-Mouse CD200 Antibody (Left). Splenocytes are stained with APC Anti-Mouse CD45R/B220 Antibody and FITC Rat IgG2a, κ Isotype Control (Right).

Related Information

1. Sample Preparation for Flow Cytometry <https://www.elabscience.com/List-detail-5594.html>
2. Staining Cell Surface Targets for Flow Cytometry <https://www.elabscience.com/List-detail-5568.html>
3. Flow Cytometry Troubleshooting Tips <https://www.elabscience.com/List-detail-5593.html>
4. How to select the appropriate detection channel through the spectrogram? <https://www.elabscience.com/List-detail-459742.html>