

FITC Anti-Human CD185/CXCR5 Antibody[J252D4]

Catalog No.	E-AB-F1287C	Reactivity	Human
Storage	Store at 2~8°C, Avoid freeze / thaw cycles	Applications	FCM

Important Note: Centrifuge before opening to ensure complete recovery of vial contents.

Antigen Information

Alternate Names	CXCR5, C-X-C chemokine receptor type 5, Burkitt lymphoma receptor 1, BLR1, Monocyte-derived receptor 15, MDR15
Uniprot ID	P32302
Gene ID	643
Background	CD185, also known as CXCR5, is a 42 kD G-protein coupled receptor with seven transmembrane regions. CXCR5 is expressed by mature B cells, follicular helper T cells, Burkitt's lymphoma cells and a subset of neurons, and mediates cell migration to the B cell follicles in the secondary lymphoid organs. The ligand of CXCR5 is CXCL13 (BLC).

Product Details

Form	Liquid
Size	20Tests/100Tests/100Tests×2
Clone No.	J252D4
Host	Mouse
Isotype	Mouse IgG1, κ
Reactivity	Human
Application	FCM
Isotype Control	FITC Mouse IgG1, κ Isotype Control[MOPC-21] [Product E-AB-F09792C]
Storage Buffer	Phosphate buffered solution, pH 7.2, containing 0.09% stabilizer and 1% protein protectant.
Shipping	Biological ice pack at 4 °C
Stability & Storage	Keep as concentrated solution. Store at 2~8°C and protected from prolonged exposure to light. Do not freeze. This product is guaranteed up to one year from purchase.

Fluorophore

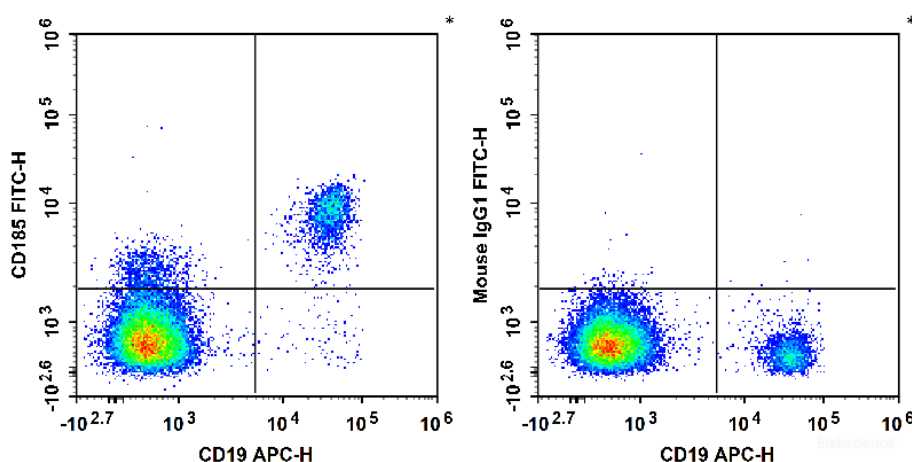
Conjugation: FITC

FITC is designed to be excited by the Blue laser (488 nm) and detected using an optical filter centered near 530 nm (e.g., a 525/40 nm bandpass filter).

Recommended usage

Each lot of this antibody is quality control tested by flow cytometric analysis. **The amount of the reagent is suggested to be used 5 μ L of antibody per test (million cells in 100 μ L staining volume or per 100 μ L of whole blood).** Please check your vial before the experiment. Since applications vary, the appropriate dilutions must be determined for individual use.

Product data



Human peripheral blood lymphocytes are stained with APC Anti-Human CD19 Antibody and FITC Anti-Human CD185/CXCR5 Antibody (Left). Lymphocytes are stained with APC Anti-Human CD19 Antibody and FITC Mouse IgG1, κ Isotype Control (Right).

Related Information

1. Sample Preparation for Flow Cytometry <https://www.elabscience.com/List-detail-5594.html>
2. Staining Cell Surface Targets for Flow Cytometry <https://www.elabscience.com/List-detail-5568.html>
3. Flow Cytometry Troubleshooting Tips <https://www.elabscience.com/List-detail-5593.html>
4. How to select the appropriate detection channel through the spectrogram? <https://www.elabscience.com/List-detail-459742.html>