

Elab Fluor® 488 Anti-Human CD203c Antibody[NP4D6]

Catalog No.	E-AB-F1297L	Reactivity	Human
Storage	Store at 2~8°C, Avoid freeze / thaw cycles	Applications	FCM

Important Note: Centrifuge before opening to ensure complete recovery of vial contents.

Antigen Information

Alternate Names	E-NPP3, ENPP3,PD-Ibeta
Uniprot ID	O14638
Gene ID	5169
Background	CD203c, a transmembrane protein and a member of the ectoenzyme family, is involved in the hydrolysis of extracellular oligonucleotides, nucleoside phosphates, and NAD (possesses ATPase and ATP pyrophosphatase activity). The molecular weight of CD203c is between 130 and 150 kD under reducing conditions and 270 kD under non-reducing conditions. CD203c is expressed on basophils and mast cells, and is highly expressed on activated basophils. Secretory glands in endometrium and glioma cells are also positive. CD203c is a multifunctional ectoenzyme involved in the clearance of extracellular nucleotides whose substrates include nucleoside triphosphates, nucleoside diphosphates, cAMP, and NAD.

Product Details

Form	Liquid
Size	20Tests/100Tests/100Tests×2
Clone No.	NP4D6
Host	Mouse
Isotype	Mouse IgG1, κ
Reactivity	Human
Application	FCM
Isotype Control	Elab Fluor® 488 Mouse IgG1, κ Isotype Control[MOPC-21] [Product E-AB-F09792L]
Storage Buffer	Phosphate buffered solution, pH 7.2, containing 0.09% stabilizer and 1% protein protectant.
Shipping	Biological ice pack at 4 °C
Stability & Storage	Keep as concentrated solution. Store at 2~8°C and protected from prolonged exposure to light.Do not freeze. This product is guaranteed up to one year from purchase.

For Research Use Only

Fluorophore

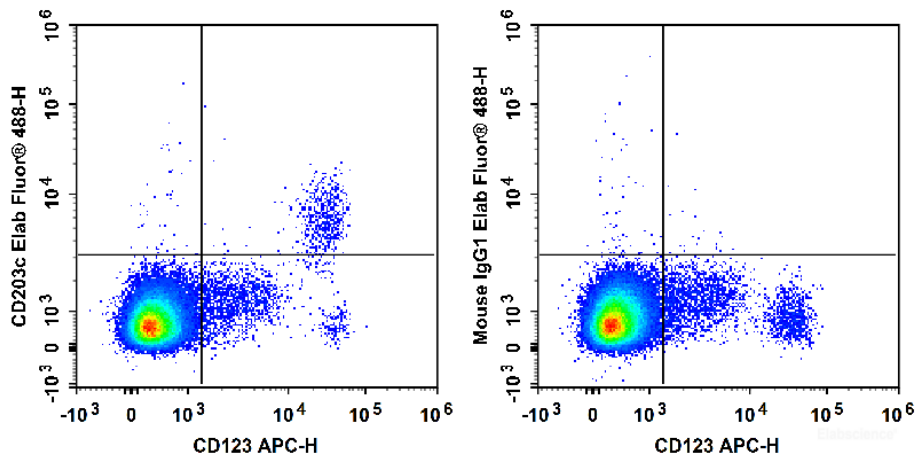
Conjugation: Elab Fluor® 488

Elab Fluor® 488 is designed to be excited by the Blue laser (488 nm) and detected using an optical filter centered near 520 nm (e.g., a 525/40 nm bandpass filter).

Recommended usage

Each lot of this antibody is quality control tested by flow cytometric analysis. **The amount of the reagent is suggested to be used 5 µL of antibody per test (million cells in 100 µL staining volume or per 100 µL of whole blood).** Please check your vial before the experiment. Since applications vary, the appropriate dilutions must be determined for individual use.

Product data



Human peripheral blood cells are stained with APC Anti-Human CD123 Antibody and Elab Fluor® 488 Anti-Human CD203c Antibody (Left). Peripheral blood cells are stained with APC Anti-Human CD123 Antibody and Elab Fluor® 488 Mouse IgG1,κ Isotype Control (Right).

Related Information

1. Sample Preparation for Flow Cytometry <https://www.elabscience.com/List-detail-5594.html>
2. Staining Intracellular Antigens for Flow Cytometry <https://www.elabscience.com/List-detail-5570.html>
3. Flow Cytometry Troubleshooting Tips <https://www.elabscience.com/List-detail-5593.html>
4. How to select the appropriate detection channel through the spectrogram? <https://www.elabscience.com/List-detail-459742.html>