

PE Anti-Mouse/Rat CD29 Antibody[HMβ1-1]

Catalog No.	E-AB-F1309D	Reactivity	Mouse,Rat
Storage	Store at 2~8°C, Avoid freeze / thaw cycles	Applications	FCM

Important Note: Centrifuge before opening to ensure complete recovery of vial contents.

Antigen Information

Alternate Names	integrin β1, VLA-β chain, β1 integrin, GPIIa, ITGB1
Uniprot ID	P09055, P49134
Gene ID	16412, 24511
Background	CD29 is a 130 kD protein, also known as integrin β1, VLA-β chain, or GPIIa. It is a member of the integrin family, expressed broadly on leukocytes, endothelial cells, smooth muscle, and epithelial cells. In association with CD49a-f, CD29 forms the VLA-1 through VLA-6 complexes, respectively. It plays an important role in cell-cell or cell-matrix interaction. The HMβ1-1 antibody reacts with both mouse and rat CD29. It is able to block cell adhesion and inhibit T cell proliferation.

Product Details

Form	Liquid
Size	50Tests/100Tests/100Tests×2
Clone No.	HMβ1-1
Host	Armenian Hamster
Isotype	Armenian Hamster IgG
Reactivity	Mouse,Rat
Application	FCM
Isotype Control	PE Armenian Hamster IgG Isotype Control[PIP] [Product E-AB-F09852D]
Storage Buffer	Phosphate buffered solution, pH 7.2, containing 0.09% stabilizer and 1% protein protectant.
Shipping	Biological ice pack at 4 °C
Stability & Storage	Keep as concentrated solution. Store at 2~8°C and protected from prolonged exposure to light.Do not freeze. This product is guaranteed up to one year from purchase.

For Research Use Only

Fluorophore

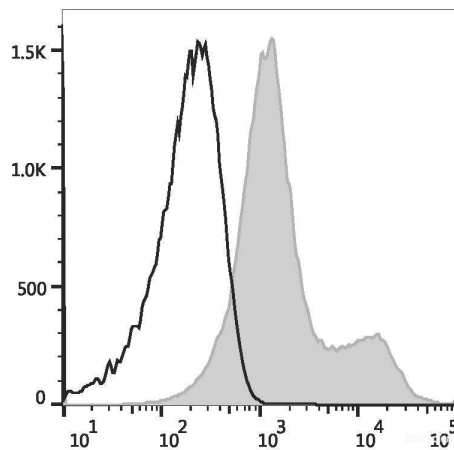
Conjugation: PE

PE is designed to be excited by the Blue (488 nm), Green (532 nm) and Yellow-Green (561 nm) lasers and detected using an optical filter centered near 575 nm (e.g., a 585/42 nm bandpass filter).

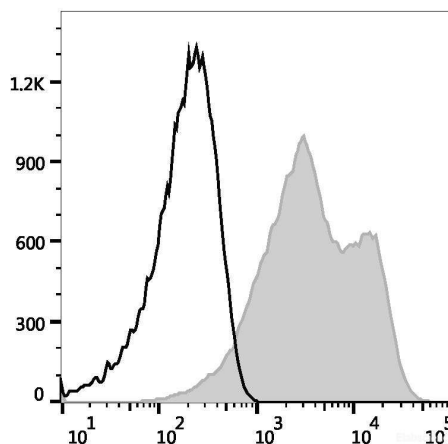
Recommended usage

Each lot of this antibody is quality control tested by flow cytometric analysis. **The amount of the reagent is suggested to be used 5 µL of antibody per test (million cells in 100 µL staining volume or per 100 µL of whole blood).** Please check your vial before the experiment. Since applications vary, the appropriate dilutions must be determined for individual use.

Product data



C57BL/6 murine splenocytes are stained with PE Anti-Mouse/Rat CD29 Antibody (filled gray histogram) or PE Armenian Hamster IgG Isotype Control (empty black histogram).



Rat splenocytes are stained with PE Anti-Mouse/Rat CD29 Antibody (filled gray histogram) or PE Armenian Hamster IgG Isotype Control (empty black histogram).

For Research Use Only

Related Information

1. Sample Preparation for Flow Cytometry <https://www.elabscience.com/List-detail-5594.html>
2. Staining Cell Surface Targets for Flow Cytometry <https://www.elabscience.com/List-detail-5568.html>
3. Flow Cytometry Troubleshooting Tips <https://www.elabscience.com/List-detail-5593.html>
4. How to select the appropriate detection channel through the spectrogram? <https://www.elabscience.com/List-detail-459742.html>

For Research Use Only