

KLHL1 Polyclonal Antibody

Catalog No. E-AB-90899

Note: Centrifuge before opening to ensure complete recovery of vial contents.

Description

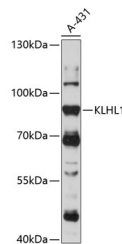
Reactivity	Human
Immunogen	Recombinant fusion protein of human KLHL1
Host	Rabbit
Isotype	IgG
Purification	Affinity purification
Conjugation	Unconjugated
Buffer	PBS with 0.01% thiomersal, 50% glycerol, pH7.3.

Applications

Recommended Dilution

WB 1:500-1:2000

Data



Western blot analysis of extracts of A-431 cells using KLHL1 Polyclonal Antibody at 1:1000 dilution.

Observed Mw:83kDa
Calculated Mw:82kDa

Preparation & Storage

Storage Store at -20°C. Avoid freeze/thaw cycles.

Background

The KLHL1 protein belongs to a family of actin-organizing proteins related to Drosophila Kelch (Nemes et al., 2000 [PubMed 10888605]). [supplied by OMIM, Feb 2010]

For Research Use Only