

**Note:** Centrifuge before opening to ensure complete recovery of vial contents.

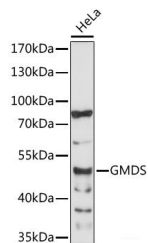
## Description

|                     |                                               |
|---------------------|-----------------------------------------------|
| <b>Reactivity</b>   | Human                                         |
| <b>Immunogen</b>    | A synthetic peptide of human GMDS             |
| <b>Host</b>         | Rabbit                                        |
| <b>Isotype</b>      | IgG                                           |
| <b>Purification</b> | Affinity purification                         |
| <b>Conjugation</b>  | Unconjugated                                  |
| <b>Formulation</b>  | PBS with 0.01% thiomersal,50% glycerol,pH7.3. |

## Applications Recommended Dilution

|           |              |
|-----------|--------------|
| <b>WB</b> | 1:500-1:2000 |
|-----------|--------------|

## Data



Western blot analysis of extracts of HeLa cells using GMDS Polyclonal Antibody at 1:1000 dilution.

**Observed Mw:42kDa**

**Calculated Mw:39kDa/41kDa**

## Preparation & Storage

**Storage** Store at -20°C. Avoid freeze/thaw cycles.

## Background

GDP-mannose 4,6-dehydratase (GMD; EC 4.2.1.47) catalyzes the conversion of GDP-mannose to GDP-4-keto-6-deoxymannose, the first step in the synthesis of GDP-fucose from GDP-mannose, using NADP<sup>+</sup> as a cofactor. The second and third steps of the pathway are catalyzed by a single enzyme, GDP-keto-6-deoxymannose 3,5-epimerase, 4-reductase, designated FX in humans (MIM 137020).

## For Research Use Only

A Reliable Research Partner in Life Science and Medicine

Toll-free: 1-888-852-8623

Web: [www.elabscience.com](http://www.elabscience.com)

Tel: 1-832-243-6086

Email: [techsupport@elabscience.com](mailto:techsupport@elabscience.com)

Fax: 1-832-243-6017