

## RAB11B Polyclonal Antibody

**Catalog No.** E-AB-91129

*Note:* Centrifuge before opening to ensure complete recovery of vial contents.

### Description

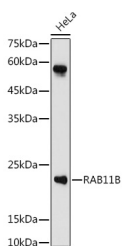
<b>Reactivity</b>	Human, Mouse, Rat
<b>Immunogen</b>	A synthetic peptide of human RAB11B
<b>Host</b>	Rabbit
<b>Isotype</b>	IgG
<b>Purification</b>	Affinity purification
<b>Conjugation</b>	Unconjugated
<b>Buffer</b>	PBS with 0.05% proclin300, 50% glycerol, pH7.3.

### Applications

### Recommended Dilution

<b>WB</b>	1:200-1:2000
<b>IF</b>	1:50-1:200

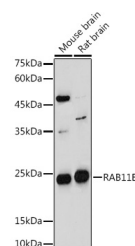
### Data



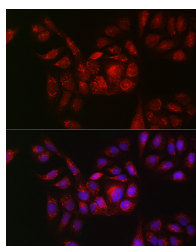
Western blot analysis of extracts of HeLa cells using RAB11B Polyclonal Antibody at 1:1000 dilution.

**Observed Mw: 24KDa**

**Calculated Mw: 19kDa/24kDa**



Western blot analysis of extracts of various cell lines using RAB11B Polyclonal Antibody at 1:1000 dilution.



Immunofluorescence analysis of U2OS cells using RAB11B Polyclonal Antibody at dilution of 1:100 (40x lens). Blue: DAPI for nuclear staining.

### Preparation & Storage

**Storage** Store at -20°C. Avoid freeze/thaw cycles.

### For Research Use Only

## Background

The Ras superfamily of small GTP-binding proteins, which includes the Ras (see MIM 190020), Ral (see MIM 179550), Rho (see MIM 165390), Rap (see MIM 179520), and Rab (see MIM 179508) families, is involved in controlling a diverse set of essential cellular functions. The Rab family, including RAB11B, appears to play a critical role in regulating exocytotic and endocytotic pathways (summary by Zhu et al., 1994 [PubMed 7811277]).[supplied by OMIM, Nov 2010]

---

## For Research Use Only