

## KLHL41 Polyclonal Antibody

**Catalog No.** E-AB-91140

*Note:* Centrifuge before opening to ensure complete recovery of vial contents.

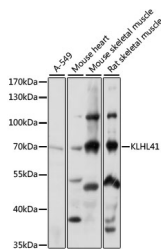
### Description

<b>Reactivity</b>	Human,Mouse,Rat
<b>Immunogen</b>	Recombinant fusion protein of human KLHL41
<b>Host</b>	Rabbit
<b>Isotype</b>	IgG
<b>Purification</b>	Affinity purification
<b>Conjugation</b>	Unconjugated
<b>Buffer</b>	PBS with 0.01% thiomersal,50% glycerol,pH7.3.

### Applications Recommended Dilution

**WB** 1:200-1:2000

### Data



Western blot analysis of extracts of various cell lines using KLHL41 Polyclonal Antibody at 1:1000 dilution.

**Observed Mw:68kDa**

**Calculated Mw:66kDa/68kDa**

### Preparation & Storage

**Storage** Store at -20°C. Avoid freeze/thaw cycles.

### Background

This gene is a member of the kelch-like family. The encoded protein contains a BACK domain, a BTB/POZ domain, and 5 Kelch repeats. This protein is thought to function in skeletal muscle development and maintenance. Mutations in this gene have been associated with nemaline myopathy (NM), a rare congenital muscle disorder.

### For Research Use Only