

SLC8A2 Polyclonal Antibody

Catalog No. E-AB-91260

Note: Centrifuge before opening to ensure complete recovery of vial contents.

Description

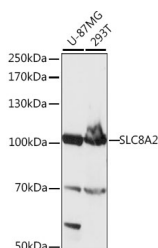
Reactivity	Human
Immunogen	Recombinant fusion protein of human SLC8A2
Host	Rabbit
Isotype	IgG
Purification	Affinity purification
Conjugation	Unconjugated
Buffer	PBS with 0.01% thiomersal, 50% glycerol, pH7.3.

Applications

Recommended Dilution

WB 1:500-1:2000

Data



Western blot analysis of extracts of various cell lines using SLC8A2 Polyclonal Antibody at 1:1000 dilution.

Observed Mw:100kDa
Calculated Mw:100kDa

Preparation & Storage

Storage Store at -20°C. Avoid freeze/thaw cycles.

Background

Mediates the electrogenic exchange of Ca²⁺ against Na⁺ ions across the cell membrane, and thereby contributes to the regulation of cytoplasmic Ca²⁺ levels and Ca²⁺-dependent cellular processes. Contributes to cellular Ca²⁺ homeostasis in excitable cells. Contributes to the rapid decrease of cytoplasmic Ca²⁺ levels back to baseline after neuronal activation, and thereby contributes to modulate synaptic plasticity, learning and memory. Plays a role in regulating urinary Ca²⁺ and Na⁺ excretion.

For Research Use Only