

PINX1 Polyclonal Antibody

Catalog No. E-AB-91719

Note: Centrifuge before opening to ensure complete recovery of vial contents.

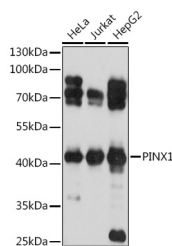
Description

Reactivity	Human
Immunogen	Recombinant fusion protein of human PINX1
Host	Rabbit
Isotype	IgG
Purification	Affinity purification
Conjugation	Unconjugated
Buffer	PBS with 0.01% thiomersal, 50% glycerol, pH7.3.

Applications Recommended Dilution

WB 1:500-1:2000

Data



Western blot analysis of extracts of various cell lines using PINX1 Polyclonal Antibody at 1:1000 dilution.

Observed Mw:43kDa

Calculated Mw:19kDa/37kDa

Preparation & Storage

Storage Store at -20°C. Avoid freeze/thaw cycles.

Background

Microtubule-binding protein essential for faithful chromosome segregation. Mediates TRF1 and TERT accumulation in nucleolus and enhances TRF1 binding to telomeres. Inhibits telomerase activity. May inhibit cell proliferation and act as tumor suppressor.

For Research Use Only