

SIPA1L1 Polyclonal Antibody

Catalog No. E-AB-92049

Note: Centrifuge before opening to ensure complete recovery of vial contents.

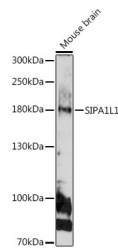
Description

Reactivity	Mouse
Immunogen	Recombinant fusion protein of human SIPA1L1
Host	Rabbit
Isotype	IgG
Purification	Affinity purification
Conjugation	Unconjugated
Buffer	PBS with 0.01% thiomersal, 50% glycerol, pH7.3.

Applications Recommended Dilution

WB 1:500-1:2000

Data



Western blot analysis of extracts of Mouse brain using SIPA1L1 Polyclonal Antibody at 1:1000 dilution.

Observed Mw:180kDa

Calculated Mw:197kDa/200kDa

Preparation & Storage

Storage Store at -20°C. Avoid freeze/thaw cycles.

Background

Stimulates the GTPase activity of RAP2A. Promotes reorganization of the actin cytoskeleton and recruits DLG4 to F-actin. Contributes to the regulation of dendritic spine morphogenesis (By similarity).

For Research Use Only