

# δ-Catenin/p120 Catenin Polyclonal Antibody

Catalog Number:E-AB-92353



**Note:** Centrifuge before opening to ensure complete recovery of vial contents.

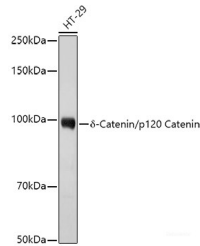
## Description

<b>Reactivity</b>	Human
<b>Immunogen</b>	Recombinant fusion protein of human δ-Catenin/p120 Catenin
<b>Host</b>	Rabbit
<b>Isotype</b>	IgG
<b>Purification</b>	Affinity purification
<b>Conjugation</b>	Unconjugated
<b>Formulation</b>	PBS with 0.02% sodium azide,50% glycerol,pH7.3.

## Applications Recommended Dilution

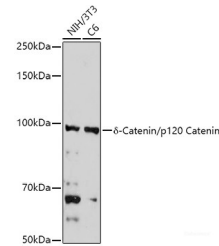
<b>WB</b>	1:500-1:2000
<b>IHC</b>	1:50-1:200

## Data

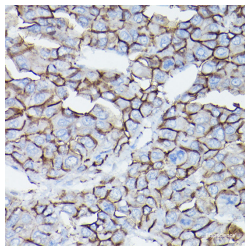


Western blot analysis of extracts of HT-29 cells using δ-Catenin/p120 Catenin Polyclonal Antibody at 1:1000 dilution.

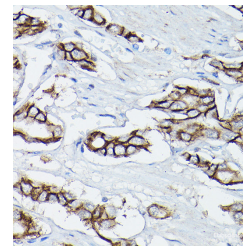
**Observed Mw:Refer to figures**  
**Calculated Mw:65-72kDa/90-108kDa**



Western blot analysis of extracts of various cell lines using δ-Catenin/p120 Catenin Polyclonal Antibody at 1:1000 dilution.



Immunohistochemistry of paraffin-embedded human liver cancer using [KO Validated] δ-Catenin/p120 Catenin Polyclonal Antibody at dilution of 1:50 (40x lens).Perform high pressure antigen retrieval with 10 mM citrate buffer pH 6.0 before commencing with IHC staining protocol.



Immunohistochemistry of paraffin-embedded human prostate cancer using [KO Validated] δ-Catenin/p120 Catenin Polyclonal Antibody at dilution of 1:50 (40x lens).Perform high pressure antigen retrieval with 10 mM citrate buffer pH 6.0 before commencing with

## For Research Use Only

A Reliable Research Partner in Life Science and Medicine

Toll-free: 1-888-852-8623

Web: [www.elabscience.com](http://www.elabscience.com)

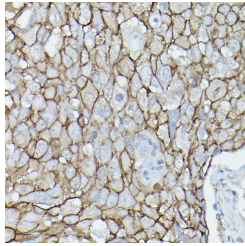
Tel: 1-832-243-6086

Email: [techsupport@elabscience.com](mailto:techsupport@elabscience.com)

Fax: 1-832-243-6017

# $\delta$ -Catenin/p120 Catenin Polyclonal Antibody

Catalog Number:E-AB-92353



Immunohistochemistry of paraffin-embedded human urothelial carcinoma using [KO Validated]  $\delta$ -Catenin/p120 Catenin Polyclonal Antibody at dilution of 1:50 (40x lens). Perform high pressure antigen retrieval with 10 mM citrate buffer pH 6.0 before commencing

## Preparation & Storage

**Storage** Store at -20°C. Avoid freeze/thaw cycles.

## Background

This gene encodes a member of the Armadillo protein family, which function in adhesion between cells and signal transduction. Multiple translation initiation codons and alternative splicing result in many different isoforms being translated. Not all of the full-length nature of the described transcript variants have been determined. Read-through transcription also exists between this gene and the neighboring upstream thioredoxin-related transmembrane protein 2 (TMX2) gene.

## For Research Use Only

A Reliable Research Partner in Life Science and Medicine

Toll-free: 1-888-852-8623

Web: [www.elabscience.com](http://www.elabscience.com)

Tel: 1-832-243-6086

Email: [techsupport@elabscience.com](mailto:techsupport@elabscience.com)

Fax: 1-832-243-6017